



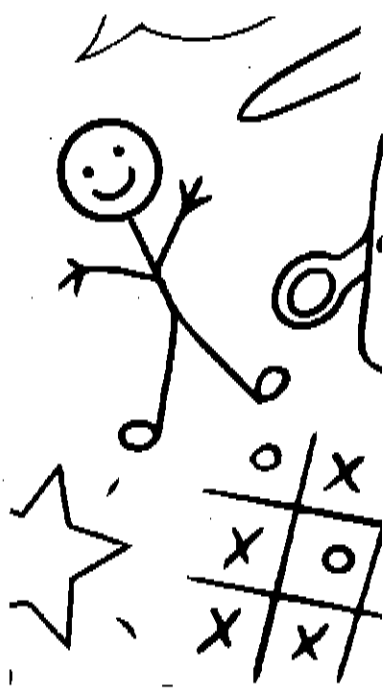
# ILWU Local 13



## Backpack and School Supply Drive

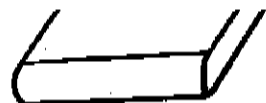
### Supplies Needed

- Backpacks
- Pens and Pencils
- Notebooks
- Ruled Paper
- 3 Ring Binders
- Crayons and Markers

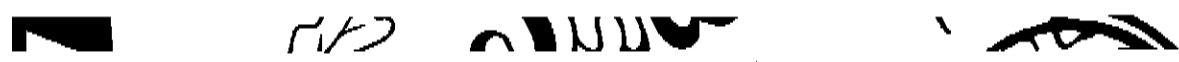


Backpacks Can Be Donated at the Dispatch Hall and Local 13 Office

# Month of July!!!



Monetary Donations To Buy Supplies Can Be Made At Dues Window of Local 13 Office



# International Longshore and Warehouse Union

## Bulletin



ILWU Local 13 • 630 Centre Street • San Pedro, CA 90731 • (310) 830-6116



## Bulletin #37-26

July 2, 2026

### PROPOSED AMENDMENTS FOR LOCAL 13 CONSTITUTION

In this upcoming election, members will be asked to vote on twelve (12) amendments to the Local 13 Constitution. Much of the language in the Constitution dates back to the founding of Local 13. In the decades since, the law and Local 13's interpretation of various provisions have undergone many changes. The following proposed amendments aim to reflect this:

#### *1. Article IV(1)(F) – Nomination of Officers*

**Change To:** In order to have his name placed on the ballot and to hold any office or position, each candidate must have been in good standing and must have worked at least one (1) shift a month as a ~~an~~ active Longshoreman in the industry in this Local or have been working for the ILWU for the previous twelve (12) months. The work requirement ~~This is~~ not applicable to men injured ~~in the industry~~ or otherwise disabled during the previous twelve (12) months.

**Reason for change:** Clarification of work requirement and revision to treat industrial and non-industrial disability in the same way.

#### *2. Article V(1)(F) – Election of Officers*

**Change To:** A person cannot be a candidate for more than one paid office or paid position at the same time.

**Reason for change:** Clarification of existing understanding of the meaning of the language.

#### *3. Article VIII(2) – Vacancy of Salaried Office*

**Change To:** Any Elective Salaried Officer, Employee, or Committeeman who absents himself three (3) consecutive times without sufficient cause from the duties and meeting assigned to him or whose conduct is detrimental to the organization, shall have his position declared vacant by the Presiding Officer and, pending notice and hearing on the charges before the Grievance or Trial Committee, he shall not hold any position in the Local for one (1) year.

**Reason for change:** To align with legal requirements.

#### *4. Article X(1)(A) – Membership Applications*

**Change To:** Applicants for membership in this Union must be qualified to perform the duties necessary for general longshore work; shall be of good moral character and ~~have no serious physical defects which may prove~~ must not be a hazard to himself or his fellow workers. He must be eighteen (18) years of age ~~and must be eligible to citizenship under the laws of the United States.~~

**Reason for change:** To align with modern standards of equal treatment.

5. *Article X(2) – Membership Applications*

**Change To:** Any officer or agent, or former officer or agent of a Corporation or Association of Employers, ~~or a deputized city, county or special police,~~ or men proven to be members of, or former members of vigilante groups, shall be prohibited to membership in this Union.

**Reason for change:** To allow former police officers membership.

6. *Article XI(1)(A) – Dues, Fines and Assessments*

**Change To:** ~~All fines, assessments or other indebtedness must be paid before your dues will be accepted.~~

**Reason for change:** To align with legal requirements.

7. *Article XI(1)(C) – Dues, Fines and Assessments*

**Change To:** Example – (The delinquent date is the 15<sup>th</sup> day of the month following the month the dues, fines, assessments or other indebtedness were accrued. In months where the 15<sup>th</sup> falls on a Saturday, Sunday, or Holiday, the delinquent date will be the first Monday after the 15<sup>th</sup> of the month.)

**Reason for change:** Clarification of existing understanding of the meaning of the language.

8. *Article XII(1)(A) – Reinstating Members and Withdrawals*

**Change To:** ~~Members wishing a withdrawal card must be paid up to date with their dues, fines, assessments or other indebtedness for the current month and must intend to quit all work under our jurisdiction. Members wishing a withdrawal card are still liable for their dues, fines, assessments or other indebtedness up to the current month of withdrawal.~~

**Reason for change:** To align with legal requirements.

9. *Article XII(1)(B) – Reinstating Members and Withdrawals*

**Change To:** ~~Those holding withdrawal cards, who do any longshore or waterfront work subject to our jurisdiction, shall be liable to all dues, fines and assessments from the date of issue of withdrawal card.~~

**Reason for change:** To align with legal requirements.

10. *Article XII(1)(F) – Reinstating Members and Withdrawals*

**Change To:** ~~No member shall be given a withdrawal card unless he has been an active member in the Local for the past twelve (12) months.~~

**Reason for change:** To align with legal requirements.

11. *Article XII(1)(G) – Reinstating Members and Withdrawals*

**Change To:** ~~Withdrawals shall not be issued three (3) months prior to date of termination of the longshore agreement.~~

**Reason for change:** To align with legal requirements.

12. *Article XII(1)(H) – Reinstating Members and Withdrawals*

**Change To:** ~~Withdrawals shall not be honored until six (6) months after termination of any strike or lockout.~~

**Reason for change:** To align with legal requirements.

Fraternally,

Mario Medina  
President

Brandi Good  
Vice President

Gabriel "Big Gabe" Zuniga  
Secretary/Treasurer



I L W U Local 13 • 630 Centre Street • San Pedro, CA 90731 • (310) 830-6116



**Bulletin #36-26**

June 26, 2026

## **ATTENTION ALL CLASS B's**

Beginning with the job you pick-up at the Dispatch Hall on **Saturday, June 27, 2026:** ID's will have **comebacks on UTRs, General Cargo and Bulk Cargo ONLY.**

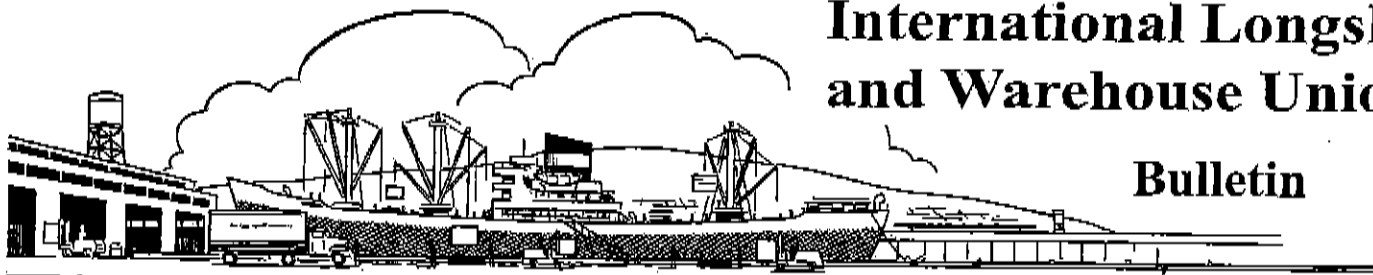
Please note: Comebacks will be on a month-to-month trial (*as manpower is needed*).

Class B IDs that are CY certified will continue to be **ONE-DAY ONLY** on all jobs.

Fraternally,  
Mario Medina  
*President*

Brandi Good  
*Vice President*

Gabriel "Big Gabe" Zuniga  
*Secretary/Treasurer*



# International Longshore and Warehouse Union

Bulletin



ILWU Local 13 • 630 Centre Street • San Pedro, CA 90731 • (310) 830-1130

## Bulletin #33-26

June 10, 2026

# CHECK YOUR DUCKET AT THE WINDOW

## REMINDER:

All members are responsible for checking their work ducket at the dispatch window before walking away.

What does that mean? First and foremost, make sure it is your registration number on that ducket. Once you leave the window, that job is now yours. (See Dispatch Rules under "Flops" #5: *During the dispatch period, any member wishing to flop must do so before leaving the dispatch window. Once leaving the window with a job and/or the next number has been called, the member is obligated to report to the job, call a replacement, and work until the replacement arrives.*)

Keep in mind, companies are not accepting duckets that have work numbers scratched off or duckets that have a work number printed on it that does not match the member checking in.

Fraternally,

Mario Medina  
*President*

Brandi Good  
*Vice President*

Gabriel "Big Gabe" Zuniga  
*Secretary/Treasurer*

### Job Forecast Report

WorkDate: 7/7/2026

Shift: Night

7/7/2026 2:00:01PM

Gangs	Shorted	Early	MO	EO	MRO	RO	LM	Total
Container Gang	0	0	0	0	0	0	0	0
Lashing Gang	0	0	0	0	0	0	0	0
4002_Gang	0	0	0	0	0	0	0	0
4012_Gang	0	0	0	0	0	0	0	0
4112_Gang	0	0	1	0	0	0	0	1
D4	0	0	0	0	0	0	0	0
	0	0	1	0	0	0	0	1

Boards	Shorted	Early	MO	EO	MRO	RO	LM	Total
Hold	0	157	261	0	61	3	0	482
Crane	0	39	21	6	1	0	0	67
Crane Top Handler	0	0	0	0	0	0	0	0
Winch	0	0	3	0	1	0	0	4
UTR	0	84	290	10	118	2	0	504
CY	0	22	78	8	6	0	0	114
Jitney	0	2	19	3	2	1	0	27
Swamper	0	52	22	7	6	0	0	87
Casual	0	0	1	0	0	0	0	1
Dock	0	31	7	4	8	0	0	50
Mechanics	0	2	0	0	0	0	0	2
Gear	0	3	0	0	0	0	0	3
Carpenter	0	0	0	0	0	0	0	0
	0	392	702	38	203	6	0	1,341

Number of flops (UTR - UTRWork = Flops): 288

TUES NITE  
FINAL

S  
|||  
38

### Gangs Dispatched

<b>Gang</b>	<b>Type</b>	<b>Workdate</b>	<b>Shift</b>	<b>Company</b>	<b>Ship</b>	<b>Berth</b>
99	S-4112	7/7/2026 6:00:00PM	2	P.S.T.	SAGA ANDORINHA	176

Alc. #	Start Time	Order Type	Ship Name	Company	Berth	Tags
1	6:00PM <i>5S 1DS 8UTR 3ST/5:30</i>	MRO	MSC MONICA CRISTINA	TTI	LB 140	LA
2	6:00PM <i>8S</i>	MRO	CSCL INDIAN OCEAN	LBCT	LB 24	LA
3	6:00PM <i>1HL</i>	MRO	BBC GENOA	SSA	LB 206	GE
4	6:00PM <i>1S 3KDP</i>	MRO	OOCL BAUHINIA	LBCT	LB 22	LA
5	6:00PM <i>12S 2DS 22UTR 5UTRS</i>	MRO	COSCO SHIPPING PEONY	SSA	LB 245	LA
6	6:00PM <i>4S 1UTR 3UTRS</i>	MRO	COSCO OCEANIA	SSA	LB 266	LA
7	6:00PM <i>8S 1HH/5:30 20UTR</i>	MRO	MSC BARI	TTI	LB 140	LA
8	5:00PM <i>1KDP</i>	MRO	HMM TOPAZ	APM	TI 400	LA
						<i>Early Dispatch</i>
9	6:00PM <i>3S 19UTR 3UTRS</i>	MRO	GEORGE II	SSA	LB 92	LA
10	6:00PM <i>6S 2DS 25UTR 3ST/5:30</i>	MRO	CMA CGM MUSCA	FMS	TI 303	LA
11	5:00PM <i>2KDP</i>	MRO	SEASPAN GANGES	APM	TI 400	LA
						<i>Early Dispatch</i>
12	6:00PM <i>4S 1DS 11UTR 1UTRS</i>	MRO	KAIMANA HILA	SSA	LB 60	LA
13	6:00PM <i>3S</i>	MRO	SM LONG BEACH	SSA	LB 96	LA
14	6:00PM <i>1HT 1HLW</i>	MRO	TOSCANA	SSA	LB 205	LA-RO

Alc. #	Time	Type	Ship Name	Company	Berth	Flags
15	6:00PM <b>IKDP</b>	MRO	OOCL BRUSSELS	LBCT	LB 26	LA
16	5:00PM <b>Cancelled</b>	MO	MSC MONICA CRISTINA	TTI	LB 140	LA
<i>Flex and Early</i>						
17	6:00PM <b>36SL</b>	MO	MSC MONICA CRISTINA	TTI	LB 140	LA
18	5:00PM <b>IS</b>	MO	CSCL INDIAN OCEAN	LBCT	LB 24	LA
<i>Flex and Early</i>						
19	6:00PM <b>Cancelled</b>	MO	BBC GENOA	SSA	LB 206	GE
20	5:00PM <b>Cancelled</b>	MO	ONE HANNOVER	TP	136	LA
<i>Flex and Early</i>						
21	6:00PM <b>5S IDS</b>	MO	ONE HANNOVER	TP	136	LA
22	6:00PM <b>2S</b>	MO	CYMONA LIFE	PTSC	LB D32	SH-Cement
23	5:00PM <b>IKDP</b>	MO	OOCL BAUHINIA	LBCT	LB 22	LA
<i>Flex and Early</i>						
24	6:00PM <b>3S</b>	MO	COSCO SHIPPING PEONY	SSA	LB 245	LA
25	6:00PM <b>2S</b>	MO	SAGA ANDORINHA	P.S.T.	176	GE
<b>*99*</b>						
26	6:00PM <b>2D 5HL</b>	MO	SAGA ANDORINHA	P.S.T.	176	GE
27	5:00PM <b>10SL</b>	MO	COSCO OCEANIA	SSA	LB 266	LA
<i>Flex and Early</i>						
28	6:00PM <b>4S IDS IDA 2HU/5:30 7UTR 1UTRS 3ST/5:30</b>	MO	COSCO OCEANIA	SSA	LB 266	LA
29	5:00PM <b>8S 2KDP</b>	MO	COYHAIQUE	APM	TI 400	LA
<i>Flex and Early</i>						

Alc. #	Time	Type	Ship Name	Company	Berth	Flags
30	6:00PM <b>3S 20SL</b>	MO	COYHAIQUE	APM	TI 400	LA
31	6:00PM <b>Cancelled</b>	MO	ONE FOCUS	ITS	LB 236	LA
32	5:00PM <b>5UTRS</b>	MO	MSC BARI	TTI	LB 140	LA
33	6:00PM <b>Cancelled</b>	MO	MSC BARI	TTI	LB 140	LA
34	5:00PM <b>Cancelled</b>	MO	HMM TOPAZ	APM	TI 400	LA
35	6:00PM <b>IS</b>	MO	HMM TOPAZ	APM	TI 400	LA
36	6:00PM <b>20SL</b>	MO	GEORGE II	SSA	LB 92	LA
37	5:00PM <b>Cancelled</b>	MO	CMA CGM MUSCA	FMS	TI 303	LA
38	6:00PM <b>2HH/5:30 4UTR 2ST/5:30</b>	MO	CMA CGM MUSCA	FMS	TI 303	LA
39	5:00PM <b>8S 2KDP</b>	MO	MISSOURI EXPRESS	APM	TI 400	LA
40	6:00PM <b>3S</b>	MO	MISSOURI EXPRESS	APM	TI 400	LA
41	5:00PM <b>12S 3KDP</b>	MO	SEASPAN GANGES	APM	TI 400	LA
42	6:00PM <b>2S</b>	MO	SEASPAN GANGES	APM	TI 400	LA
43	6:00PM <b>4S 6SL 1DS 1HL 8UTR 2UTRS</b>	MO	KAIMANA HILA	SSA	LB 60	LA
44	6:00PM <b>1HH/5:30</b>	MO	SM LONG BEACH	SSA	LB 96	LA

Jul. 7. 2026 2:45PM

No. 8671 P. 10

*Flex and Early*

*Flex and Early*

*Flex and Early*

*Flex and Early*

*Flex and Early*

Alc. #	Time	Type	Ship Name	Company	Berth	LA RO
45	6:00PM	MO	TOSCANA	SSA	LB 205	LA RO
	<b>8SD 6SL 1HT</b>					
46	6:00PM	MO	SUPER NOVA	MET	LB 214	SH-All Comd
	<b>4CDAB/5:30 4PLMD</b>					
47	5:00PM	MO	YM UNIFORMITY	PA	100	LA
	Cancelled					
	<i>Flex and Early</i>					
48	6:00PM	MO	YM UNIFORMITY	PA	100	LA
	<b>8S 2DS 4HH/5:30 20UTR 3ST/5:30</b>					
49	5:00PM	MO	YM MATURITY	TP	136	LA
	<b>2S 1DS 1UTR</b>					
	<i>Flex and Early</i>					
50	6:00PM	MO	YM MATURITY	TP	136	LA
	<b>6S 3DS 7UTR 2ST/5:30</b>					
51	6:00PM	MO	MATSON OAHU	SSA	LB 94	LA
	<b>14S 3DS 2HH/5:30 1HL 21UTR 3UTRS 9ST/5:30</b>					
52	5:00PM	MO	GANGES	ITS	LB 232	LA
	Cancelled					
	<i>Flex and Early</i>					
53	6:00PM	MO	GANGES	ITS	LB 232	LA
	<b>14S 3DS 26UTR 9ST/5:30</b>					
54	6:00PM	MO	CEMTEX ORIENT	MET	LB 212	SH-All Comd
	<b>2CDAB/5:30 8PLMD</b>					
55	5:00PM	MO	CMA CGM FLORIDA	FMS	TI 304	LA
	<b>2S 22SL 1DS 2UTR</b>					
	<i>Flex and Early</i>					
56	6:00PM	MO	CMA CGM FLORIDA	FMS	TI 304	LA
	<b>14S 3DS 34UTR 13ST/5:30</b>					
57	5:00PM	MO	EVER MAGIC	ETS	TI 227	LA
	<b>4S 28SL 2DS 2UTRS</b>					
	<i>Flex and Early</i>					
58	6:00PM	MO	EVER MAGIC	ETS	TI 227	LA
	<b>12S 2DS 32UTR 2UTRS 10ST/5:30</b>					
59	5:00PM	MO	MSC TAMPICO	PA	102	LA
	<b>10S 24SL 5DS 3UTR</b>					
	<i>Flex and Early</i>					

Alc. #	Time	Type	Ship Name	Company	Berth	No. 8671 ags	P. 12
60	6:00PM	MO	MSC TAMPICO	PA	102	LA	
	<b>6S 39UTR 9ST/5:30</b>						
61	5:00PM	MO	WAN HAI A03	YTI	TI 214	LA	
	<b>26SL 6DS 1HL 1UTR</b>						
62	6:00PM	MO	WAN HAI A03	YTI	TI 214	LA	<i>Flex and Early</i>
	<b>20S 39UTR 13ST/5:30</b>						
63	6:00PM	MO	CSCL INDIAN OCEAN	LBCT	LB 24	LA	
	<b>Cancelled</b>						
64	6:00PM	MO	OOCL BAUHINIA	LBCT	LB 22	LA	
	<b>4S</b>						
65	6:00PM	MO	MSC BARI	TTI	LB 140	LA	
	<b>Cancelled</b>						
66	6:00PM	MO	CMA CGM MUSCA	FMS	TI 303	LA	
	<b>Cancelled</b>						
67	6:00PM	MO	CMA CGM FLORIDA	FMS	TI 304	LA	
	<b>7S 1DS 9UTR</b>						
68	6:00PM	MO	EVER MAGIC	ETS	TI 227	LA	
	<b>8S 2DS 16UTR 2UTRS 3ST/5:30</b>						
69	6:00PM	MO	MSC TAMPICO	PA	102	LA	
	<b>4S 8UTR 2ST/5:30</b>						
70	6:00PM	MO	WAN HAI A03	YTI	TI 214	LA	
	<b>4S 8UTR</b>						
71	3:00AM	MRO	SEASPAN GANGES	APM	TI 400	LA	
	<b>7S 4KDP</b>						
72	3:00AM	MO	MISSOURI EXPRESS	APM	TI 400	LA	
	<b>13S 4KDP 2HH/2:30 2UTRS</b>						
73	3:00AM	MO	SEASPAN GANGES	APM	TI 400	LA	
	<b>2HH/2:30</b>						
74	5:00PM	MRO	COYHAIQUE	APM	TI 400	LA	
	<b>3KDP</b>						
	<i>Early Dispatch</i>						

**Type Of Orders : Extra Order**

**Work Date: 7/7/26**

Ver	Alc#	Ship Name	Start Time	Berth	Type	Received Date/Time	Tags	Mod Status	Tota Job#
<i>Shift : 2</i>									
<b>STEVE. SERV. OF AMER (502)</b>									
		DOCK WORK	7/7/26 5:00PM	LB 266	EO	7/7/26 12:24PM	LA	N	10
		<i>4DS 4CT/4:30 2ST/4:30 (DUENEZ)</i>							<i>Flex and Early</i>
-----									
		DOCK WORK RAILS	7/7/26 5:00PM	LB 245	EO	7/7/26 12:24PM	LA	N	1
		<i>1DA (DUENEZ)</i>							<i>Flex and Early</i>
-----									
		DOCK WORK	7/7/26 5:00PM	LB 205	EO	7/7/26 12:24PM	LA	N	1
		<i>1GAT (DUENEZ)</i>							<i>Flex and Early</i>
-----									
		DOCK WORK	7/7/26 6:00PM	LB 266	EO	7/7/26 12:25PM	LA	N	6
		<i>2DS 1DA 3UTR (DUENEZ)</i>							
-----									
		DOCK WORK	7/7/26 6:00PM	LB 94	EO	7/7/26 12:25PM	LA	N	6
		<i>1DA 1HL 4ST/5:30 (DUENEZ)</i>							
-----									
		DOCK WORK	7/7/26 3:00AM	LB 94	EO	7/7/26 12:26PM	LA	N	6
		<i>2HL 1UTR 3ST/2:30 (DUENEZ)</i>							
-----									
		DOCK WORK	7/7/26 5:00PM	LB 60	EO	7/7/26 12:26PM	LA	N	2
		<i>2UTR (DUENEZ)</i>							<i>Flex and Early</i>
-----									
<b>METROPOLITAN STEV. CO. (503)</b>									
		DOCK WORK	7/7/26 5:00PM	LB 215	EO	7/7/26 12:28PM	SH-All Comd	N	2
		<i>2DSW (DUENEZ)</i>							<i>Flex and Early</i>
-----									
<b>YUSEN TERMINALS INC. (504)</b>									
		DOCK WORK	7/7/26 5:00PM	TI 214	EO	7/7/26 12:27PM	LA	N	18
		<i>8DS 7CT/4:30 1HL 2UTR (DUENEZ)</i>							<i>Flex and Early</i>
-----									

**Type Of Orders : Extra Order**

**Work Date: 7/7/26**

Ver	Alc#	Ship Name	Start Time	Berth	Type	Received Date/Time	Tags	Mod Status	Total Jobs
<b>Shift : 2</b>									
<b>YUSEN TERMINALS INC. (504)</b>									
		DOCK WORK RAILS	7/7/26 5:00PM	TI 214	EO	7/7/26 12:27PM	LA	N	1
<i>1ST/4:30 (DUENEZ)</i>									<b>Flex and Early</b>
<b>PORTSAMERICA (505)</b>									
		DOCK WORK	7/7/26 5:00PM	126	EO	7/7/26 11:17AM	LA	D	11
<i>2DS 6CT/4:30 1ST/4:30 2GAT (DUENEZ)</i>									<b>Flex and Early</b>
		DOCK WORK	7/7/26 6:00PM	126	EO	7/7/26 11:18AM	LA	N	3
<i>1DSW 2UTR (HULK)</i>									
<b>TTI (507)</b>									
		DOCK WORK	7/7/26 5:00PM	LB 140	EO	7/7/26 12:22PM	LA	N	14
<i>4DS 6CT/4:30 4UTR (DUENEZ)</i>									<b>Flex and Early</b>
		DOCK WORK	7/7/26 6:00PM	LB 140	EO	7/7/26 12:23PM	LA	N	2
<i>2DS (DUENEZ)</i>									
		DOCK WORK RAILS	7/7/26 5:00PM	LB 140	EO	7/7/26 12:23PM	LA	N	7
<i>2DA 3UTR 2ST/4:30 (DUENEZ)</i>									<b>Flex and Early</b>
<b>ITS (508)</b>									
		DOCK WORK	7/7/26 5:00PM	LB 232	EO	7/7/26 11:56AM	LA	N	21
<i>6DS 1DA 8CT/4:30 5UTR 1ST/4:30 (HULK)</i>									<b>Flex and Early</b>
		DOCK WORK	7/7/26 6:00PM	LB 232	EO	7/7/26 11:57AM	LA	N	2
<i>2DS (HULK)</i>									
<b>FENIX MARINE SERVICES (510)</b>									

**Type Of Orders : Extra Order****Work Date: 7/7/26**

Ver	Alc#	Ship Name	Start Time	Berth	Type	Received Date/Time	Tags	Mod Status	Tota Jobs
<b>Shift : 2</b>									
<b>FENIX MARINE SERVICES (510)</b>									
		DOCK WORK	7/7/26 5:00PM	TI 302	EO	7/7/26 12:22PM	LA	N	41
									<i>Flex and Early</i>
<b>9DS 2DA 4CT/4:30 17UTR 9ST/4:30 (DUENEZ)</b>									
-----									
		DOCK WORK RAILS	7/7/26 5:00PM	TI 302	EO	7/7/26 12:22PM	LA	N	8
									<i>Flex and Early</i>
<b>8UTR (DUENEZ)</b>									
-----									
<b>LONG BEACH CONT. TER. (512)</b>									
		DOCK WORK	7/7/26 6:00PM	LB 24	EO	7/7/26 11:56AM	LA	N	2
<b>2CT/5:30 (HULK)</b>									
-----									
<b>TRAPAC (514)</b>									
		DOCK WORK	7/7/26 5:00PM	136	EO	7/7/26 11:14AM	LA	D	3
									<i>Flex and Early</i>
<b>2DS 1ST/4:30 (HULK)</b>									
-----									
		DOCK WORK	7/7/26 6:00PM	136	EO	7/7/26 11:15AM	LA	N	7
									<i>Flex and Early</i>
<b>1DS 4RMG/5:30 1UTR 1ST/5:30 (HULK)</b>									
-----									
		DOCK WORK RAILS	7/7/26 5:00PM	136	EO	7/7/26 11:16AM	LA	N	1
									<i>Flex and Early</i>
<b>1DA (HULK)</b>									
-----									
<b>APM TERMINALS (515)</b>									
		DOCK WORK	7/7/26 5:00PM	TI 400	EO	7/7/26 11:52AM	LA	D	3
									<i>Flex and Early</i>
<b>2DSW 1UTR (HULK)</b>									
-----									
		DOCK WORK RAILS	7/7/26 5:00PM	TI 400	EO	7/7/26 11:54AM	LA	N	13
									<i>Flex and Early</i>
<b>2KDA 10UTR 1ST/4:30 (HULK)</b>									
-----									
<b>P.C.M.C. (517)</b>									

**Type Of Orders : Extra Order**

**Work Date: 7/7/26**

Ver	Alc#	Ship Name	Start Time	Berth	Type	Received Date/Time	Tags	Mod Status	Tota Jobs
<b>Shift : 2</b>									
<b>P.C.M.C. (517)</b>									
		DOCK WORK	7/7/26 5:00PM	TI212	EO	7/7/26 11:54AM	LA	N	2
<b>2MWT (HULK)</b>									<i>Flex and Early</i>
-----									
<b>EVERPORT TERMINAL SERVICES (524)</b>									
		DOCK WORK	7/7/26 5:00PM	TI233	EO	7/7/26 11:05AM	LA	N	25
<b>2DS 1DA 4CT/4:30 14UTR 4ST/4:30 (big paul)</b>									<i>Flex and Early</i>
-----									
<b>PACIFIC TERMINAL SERVICES CO. (525)</b>									
		DOCK WORK	7/7/26 6:00PM	LB 108	EO	7/7/26 11:55AM	LA	N	4
<b>1DMSW 3UTR (HULK)</b>									
-----									

**AVERAGE REPORT**  
***For Night Shift***

	6/30/2026	7/1/2026	7/2/2026	7/3/2026	7/4/2026	7/5/2026	7/6/2026
	Tue	Wed	Thu	Fri	Sat	Sun	Mon
<b>Container</b>	0	0	0	0	0	0	0
<b>Lashing</b>	0	0	0	0	0	0	0
<b>Primary</b>	197	205	8	16	22	22	22
<b>Secondary</b>	161	169	8	10	10	18	26
<b>Hold</b>	175	179	8	16	18	20	24
<b>Dock</b>	142	150	0	8	16	18	18
<b>Jitney</b>	134	142	0	7	15	16	18
<b>Winch</b>	163	171	0	8	16	20	20
<b>Carpenter</b>	135	141	0	8	9	17	18
<b>A-Crane</b>	175	183	8	16	22	22	22
<b>Casual</b>	119	123	8	11	18	18	18
<b>Swamper</b>	120	120	0	8	16	16	16
<b>B-Crane</b>	190	198	0	8	16	24	30
<b>A-UTR</b>	179	180	8	9	17	18	18
<b>B_UTR</b>	189	197	8	16	24	24	26
<b>Mechanics</b>	154	154	0	8	9	9	17
<b>Night ID</b>	164	172	8	16	24	24	24
<b>Steady</b>	0	0	0	0	0	0	0
<b>Ship Gang</b>	0	0	0	0	0	0	0
<b>Dock Gang</b>	0	0	0	0	0	0	0