



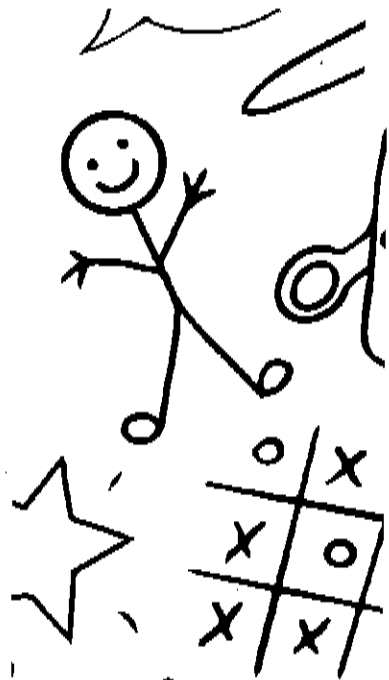
ILWU Local 13



Backpack and School Supply Drive

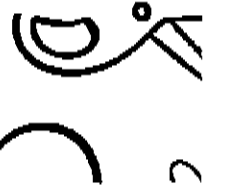
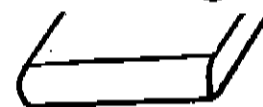
Supplies Needed

- Backpacks
- Pens and Pencils
- Notebooks
- Ruled Paper
- 3 Ring Binders
- Crayons and Markers



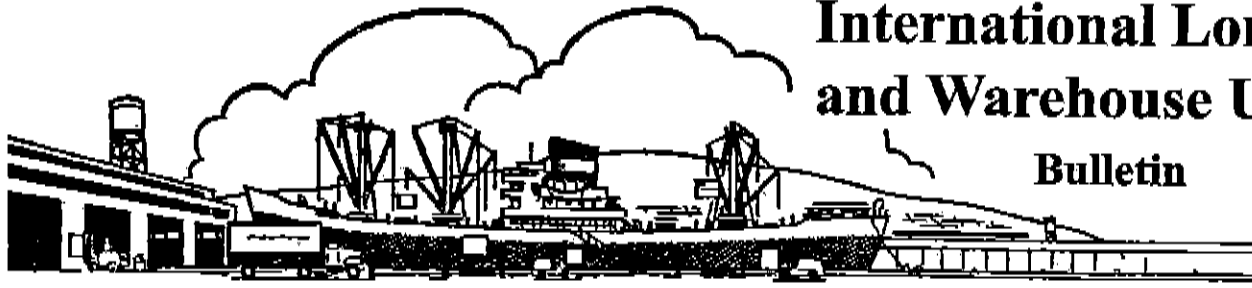
Backpacks Can Be Donated at the Dispatch Hall
and Local 13 Office

Month of July!!!



Monetary Donations To Buy Supplies Can Be
Made At Dues Window of Local 13 Office





International Longshore and Warehouse Union

Bulletin



ILWU Local 13 • 630 Centre Street • San Pedro, CA 90731 • (310) 830-6116



Bulletin #36-26

June 26, 2026

ATTENTION ALL CLASS B's

Beginning with the job you pick-up at the Dispatch Hall on **Saturday, June 27, 2026:** ID's will have comebacks on UTRs, General Cargo and Bulk Cargo ONLY.

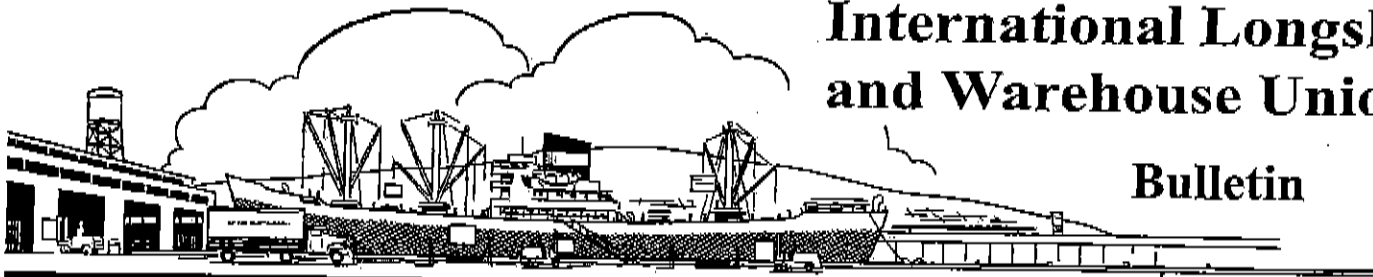
Please note: Comebacks will be on a month-to-month trial (*as manpower is needed*).

Class B IDs that are CY certified will continue to be ONE-DAY ONLY on all jobs.

Fraternally,
Mario Medina
President

Brandi Good
Vice President

Gabriel "Big Gabe" Zuniga
Secretary/Treasurer



International Longshore and Warehouse Union

Bulletin



I L W U Local 13 • 630 Centre Street • San Pedro, CA 90731 • (310) 830-1130

Bulletin #33-26

June 10, 2026

CHECK YOUR DUCKET AT THE WINDOW

REMINDER:

All members are responsible for checking their work ducket at the dispatch window before walking away.

What does that mean? First and foremost, make sure it is your registration number on that ducket. Once you leave the window, that job is now yours. (See Dispatch Rules under "Flops" #5: *During the dispatch period, any member wishing to flop must do so before leaving the dispatch window. Once leaving the window with a job and/or the next number has been called, the member is obligated to report to the job, call a replacement, and work until the replacement arrives.*)

Keep in mind, companies are not accepting duckets that have work numbers scratched off or duckets that have a work number printed on it that does not match the member checking in.

Fraternally,

Mario Medina
President

Brandi Good
Vice President

Gabriel "Big Gabe" Zuniga
Secretary/Treasurer

Job Forecast Report

WorkDate: 7/6/2026

Shift: Night

7/6/2026 2:16:42PM

Gangs	Shorted	Early	MO	EO	MRO	RO	LM	Total
Container Gang	0	0	0	0	0	0	0	0
Lashing Gang	0	0	0	0	0	0	0	0
4002_Gang	0	0	0	0	0	0	0	0
4012_Gang	0	0	0	0	0	0	0	0
4112_Gang	0	0	2	0	0	0	0	2
D4	0	0	0	0	0	0	0	0
	0	0	2	0	0	0	0	2

Boards	Shorted	Early	MO	EO	MRO	RO	LM	Total
Hold	0	133	254	0	36	0	0	423
Crane	0	62	8	14	0	0	0	84
Crane Top Handler	0	0	0	0	0	0	0	0
Winch	0	0	6	1	0	0	0	7
UTR	0	178	219	17	50	2	0	466
CY	0	32	68	18	0	2	0	120
Jitney	0	8	25	4	1	1	0	39
Swamper	0	62	21	4	2	0	0	89
Casual	0	0	2	0	0	0	0	2
Dock	0	72	24	9	2	0	0	107
Mechanics	0	2	0	0	0	0	0	2
Gear	0	5	0	0	0	0	0	5
Carpenter	0	0	1	0	0	0	0	1
	0	554	628	67	91	5	0	1,345

Number of flops (UTR - UTRWork = Flops): 215

MONDAY NIGHT FINAL
7/6/26

S	D
99	0
38	

Gangs Dispatched

Gang	Type	Workdate	Shift	Company	Ship	Berth
55	S-4112	7/6/2026 6:00:00PM	2	SSA	BBC GENOA	LB 206
111	S-4112	7/6/2026 6:00:00PM	2	P.S.T.	POCHARD	176

Alc. #	Start Time	Order Type	Ship Name	Company	Berth	Tags
1	6:00PM 8S IDS 9UTR	MRO	MSC MONICA CRISTINA	TTI	LB 140	LA
2	6:00PM 1HL	MRO	WAN HAI A05	YTI	TI 214	LA
3	6:00PM 15S	MRO	CSCL INDIAN OCEAN	LBCT	LB 24	LA
4	5:00PM 9S 2KDP	MRO	GUTHORM MAERSK	APM	TI 400	LA
5	6:00PM 2KDP	MRO	OOCL BAUHINIA	LBCT	LB 22	LA
<i>Early Dispatch</i>						
6	6:00PM 4S 10UTR 3UTRS	MRO	COSCO SHIPPING PEONY	SSA	LB 245	LA
7	6:00PM 3S 8UTR 3UTRS	MRO	COSCO OCEANIA	SSA	LB 266	LA
8	5:00PM 7S 3KDP	MRO	COYHAIQUE	APM	TI 400	LA
<i>Early Dispatch</i>						
9	6:00PM 4S 17UTR	MRO	ONE FOCUS	ITS	LB 236	LA
10	6:00PM 2S IDS	MRO	MSC BARI	TTI	LB 140	LA
11	5:00PM 1UTRS	MRO	HMM TOPAZ	APM	TI 400	LA
<i>Early Dispatch</i>						
12	5:00PM Cancelled	MO	MSC MONICA CRISTINA	TTI	LB 140	LA
<i>Flex and Early</i>						
13	6:00PM Cancelled	MO	MSC MONICA CRISTINA	TTI	LB 140	LA
14	6:00PM 4S 20SL 1DS 7UTR 2ST/5:30	MO	WAN HAI A05	YTI	TI 214	LA

Alc. #	Time	Type	Ship Name	Company	Berth	Tags
15	5:00PM 2S 2KDP	MO	CACL INDIAN OCEAN	LBCT	LB 24	LA
<i>Flex and Early</i>						
16	5:00PM 4S 1KDP 2UTRS	MO	GUTHORM MAERSK	APM	TI 400	LA
<i>Flex and Early</i>						
17	6:00PM 6S 20SL	MO	GUTHORM MAERSK	APM	TI 400	LA
<i>Flex and Early</i>						
18	6:00PM 4S 4D 2CMBC/5:30 1CPWT 5HL 2UTR	MO	BBC GENOA	SSA	LB 206 *55*	GE
<i>Flex and Early</i>						
19	5:00PM Cancelled	MO	ONE HANNOVER	TP	136	LA
<i>Flex and Early</i>						
20	6:00PM 3S 3DS 7UTR 2ST/5:30	MO	ONE HANNOVER	TP	136	LA
<i>Flex and Early</i>						
21	6:00PM 2S	MO	POCHARD	P.S.T.	176 *111*	GE
<i>Flex and Early</i>						
22	6:00PM 2D 2HL 4UTR	MO	POCHARD	P.S.T.	176	GE
<i>Flex and Early</i>						
23	5:00PM 4KDP	MO	OOCL BAUHINIA	LBCT	LB 22	LA
<i>Flex and Early</i>						
24	6:00PM 14S 1KDP	MO	OOCL BAUHINIA	LBCT	LB 22	LA
<i>Flex and Early</i>						
25	6:00PM 10S 2DS 15UTR 2UTRS 6ST/5:30	MO	COSCO SHIPPING PEONY	SSA	LB 245	LA
<i>Flex and Early</i>						
26	5:00PM Cancelled	MO	COSCO OCEANIA	SSA	LB 266	LA
<i>Flex and Early</i>						
27	6:00PM Cancelled	MO	COSCO OCEANIA	SSA	LB 266	LA
<i>Flex and Early</i>						
28	5:00PM 3UTRS	MO	COYHAIQUE	APM	TI 400	LA
<i>Flex and Early</i>						
29	6:00PM 2S	MO	COYHAIQUE	APM	TI 400	LA

Alc. #	Time	Type	Ship Name	Company	Berth	Tags
30 Cancelled	6:00PM	MO	ONE FOCUS	ITS	LB 236	LA
31	5:00PM 1UTRS	MO	MSC BARI	TTI	LB 140	LA
<i>Flex and Early</i>						
32	6:00PM 12S 3DS 26UTR 9ST/5:30	MO	MSC BARI	TTI	LB 140	LA
33	5:00PM 4S 1KDP	MO	HMM TOPAZ	APM	TI 400	LA
<i>Flex and Early</i>						
34	6:00PM 2S	MO	HMM TOPAZ	APM	TI 400	LA
35	5:00PM 14SL 1DS 1HL 1UTRS	MO	GEORGE II	SSA	LB 92	LA
<i>Flex and Early</i>						
36	6:00PM 17S 2DS 24UTR 2UTRS 9ST/5:30	MO	GEORGE II	SSA	LB 92	LA
37	5:00PM 2DS	MO	CMA CGM MUSCA	FMS	TI 303	LA
<i>Flex and Early</i>						
38	6:00PM 16S 2DS 36UTR 10ST/5:30	MO	CMA CGM MUSCA	FMS	TI 303	LA
39	5:00PM 8S 3KDP 2UTRS	MO	MISSOURI EXPRESS	APM	TI 400	LA
<i>Flex and Early</i>						
40	6:00PM 1S	MO	MISSOURI EXPRESS	APM	TI 400	LA
41	5:00PM 8S 3KDP 2UTRS	MO	SEASPAN GANGES	APM	TI 400	LA
<i>Flex and Early</i>						
42	6:00PM 1S	MO	SEASPAN GANGES	APM	TI 400	LA
43	6:00PM 8S 2DS 14UTR 2UTRS 6ST/5:30	MO	KAIMANA HILA	SSA	LB 60	LA
44	5:00PM 6S 22SL 3DS 1HL 3UTRS	MO	SM LONG BEACH	SSA	LB 96	LA
<i>Flex and Early</i>						

Alc. #	Time	Type	Ship Name	Company	Berth	Tags
45	6:00PM	MO	SM LONG BEACH	SSA	LB 96	LA
<i>16S 1DS 2HH/5:30 28UTR 1UTRS 12ST/5:30</i>						
46	6:00PM	MO	TOSCANA	SSA	LB 205	LA RO
<i>12S 28SL 8DA 2HT 1DWD 14HLW</i>						
47	5:00PM	MO	OOCL BRUSSELS	LBCT	LB 26	LA
<i>6S 36SL 2KDP 3UTRS</i>						
<i>Flex and Early</i>						
48	6:00PM	MO	OOCL BRUSSELS	LBCT	LB 26	LA
<i>4S 1KDP</i>						
49	6:00PM	MO	CSCL INDIAN OCEAN	LBCT	LB 24	LA
<i>4S 1KDP</i>						
50	5:00PM	MO	GUTHORM MAERSK	APM	TI 400	LA
<i>4S 2KDP</i>						
<i>Flex and Early</i>						
51	6:00PM	MO	OOCL BAUHINIA	LBCT	LB 22	LA
<i>Cancelled</i>						
52	6:00PM	MO	MSC BARI	TTI	LB 140	LA
<i>8S 2DS 3HH/5:30 18UTR 6ST/5:30</i>						
53	6:00PM	MO	CMA CGM MUSCA	FMS	TI 303	LA
<i>12S 3DS 27UTR 6ST/5:30</i>						
54	3:00AM	MO	COYHAIQUE	APM	TI 400	LA
<i>10S 3KDP 2UTR</i>						
55	3:00AM	MO	SEASPAN GANGES	APM	TI 400	LA
<i>14S 4KDP 1HH/2:30 2UTRS</i>						

Type Of Orders : Extra Order

Work Date: 7/6/26

Ver	Alc#	Ship Name	Start Time	Berth	Type	Received Date/Time	Tags	Mod Status	Tota Jobs
<i>Shift : 2</i>									
STEVE. SERV. OF AMER (502)									
		DOCK WORK	7/6/26 5:00PM	LB 60	EO	7/6/26 11:57AM	LA	N	4
		<i>1DA 1HL 1UTR 1ST/4:30 (DUENEZ)</i>							<i>Flex and Early</i>

		DOCK WORK	7/6/26 6:00PM	LB 60	EO	7/6/26 11:58AM	LA	N	7
		<i>1HL 2UTR 4ST/5:30 (DUENEZ)</i>							

		DOCK WORK	7/6/26 6:00PM	LB 94	EO	7/6/26 12:21PM	LA	N	19
		<i>3DA 1HL 9UTR 6ST/5:30 (MOOSE)</i>							

		DOCK WORK	7/6/26 6:00PM	LB 266	EO	7/6/26 12:22PM	LA	N	7
		<i>1DA 1HL 3UTR 2ST/5:30 (MOOSE)</i>							

		DOCK WORK	7/6/26 5:00PM	LB 205	EO	7/6/26 12:22PM	LA	N	1
		<i>1GAT (MOOSE)</i>							<i>Flex and Early</i>

		DOCK WORK	7/6/26 5:00PM	LB 94	EO	7/6/26 12:23PM	LA	N	7
		<i>5DS 2CT/4:30 (MOOSE)</i>							<i>Flex and Early</i>

		DOCK WORK RAILS	7/6/26 5:00PM	LB 245	EO	7/6/26 12:23PM	LA	N	5
		<i>2DA 2UTR 1ST/4:30 (MOOSE)</i>							<i>Flex and Early</i>

		DOCK WORK	7/6/26 5:00PM	LB 266	EO	7/6/26 12:24PM	LA	N	7
		<i>4DS 3CT/4:30 (MOOSE)</i>							<i>Flex and Early</i>

METROPOLITAN STEV. CO. (503)									
		DOCK WORK RAILS	7/6/26 6:00PM	LB 213	EO	7/6/26 12:17PM	SH-All Comd	N	4
		<i>4D (MOOSE)</i>							

Type Of Orders : Extra Order

Work Date: 7/6/26

Ver	Alc#	Ship Name	Start Time	Berth	Type	Received Date/Time	Tags	Mod Status	Tota Jobs
Shift : 2									
METROPOLITAN STEV. CO. (503)									
		DOCK WORK	7/6/26 5:00PM	LB 215	EO	7/6/26 12:18PM	SH-All Comd	N	1
		<i>1DSW</i> <i>(MOOSE)</i>							<i>Flex and Early</i>
YUSEN TERMINALS INC. (504)									
		DOCK WORK	7/6/26 5:00PM	TI 214	EO	7/6/26 12:20PM	LA	N	33
		<i>15DS 2DA 7CT/4:30 1HL 5UTR 3ST/4:30</i> <i>(MOOSE)</i>							<i>Flex and Early</i>
		DOCK WORK RAILS	7/6/26 5:00PM	TI 214	EO	7/6/26 12:20PM	LA	N	14
		<i>4DA 8UTR 2ST/4:30</i> <i>(MOOSE)</i>							<i>Flex and Early</i>
PORTSAMERICA (505)									
		DOCK WORK	7/6/26 5:00PM	126	EO	7/6/26 12:06PM	LA	N	14
		<i>4DS 1DA 1HL 1UTR 7ST/4:30</i> <i>(DUENEZ)</i>							<i>Flex and Early</i>
		DOCK WORK	7/6/26 6:00PM	126	EO	7/6/26 12:06PM	LA	N	3
		<i>3UTR</i> <i>(DUENEZ)</i>							
TTI (507)									
		DOCK WORK RAILS	7/6/26 5:00PM	LB 140	EO	7/6/26 12:25PM	LA	N	15
		<i>3DA 9UTR 3ST/4:30</i> <i>(MOOSE)</i>							<i>Flex and Early</i>
		DOCK WORK	7/6/26 6:00PM	LB 140	EO	7/6/26 12:25PM	LA	N	7
		<i>2DS 5ST/5:30</i> <i>(MOOSE)</i>							
		DOCK WORK	7/6/26 5:00PM	LB 140	EO	7/6/26 12:27PM	LA	N	43
		<i>9DS 1DA 12CT/4:30 15UTR 6ST/4:30</i> <i>(MOOSE)</i>							<i>Flex and Early</i>

ITS (508)

Type Of Orders : Extra Order

Work Date: 7/6/26

Ver	Alc#	Ship Name	Start Time	Berth	Type	Received Date/Time	Tags	Mod Status	Tota Job#
Shift : 2									
ITS (508)									
		DOCK WORK	7/6/26 6:00PM	LB 232	EO	7/6/26 12:12PM	LA	N	1
<i>IDS (MOOSE)</i>									

		DOCK WORK	7/6/26 5:00PM	LB 232	EO	7/6/26 12:14PM	LA	N	26
								<i>Flex and Early</i>	
<i>5DS 1DA 10CT/4:30 1HL 6UTR 3ST/4:30 (MOOSE)</i>									

PASHA STEVADORE TERMINAL (509)									
		DOCK WORK	7/6/26 5:00PM	179	EO	7/6/26 1:32PM	LA	N	1
<i>1GAT (TONY D)</i>									

FENIX MARINE SERVICES (510)									
		DOCK WORK	7/6/26 5:00PM	TI 302	EO	7/6/26 12:27PM	LA	N	30
<i>4DA 26UTR (MOOSE)</i>									

		DOCK WORK RAILS	7/6/26 5:00PM	TI 302	EO	7/6/26 12:28PM	LA	N	33
								<i>Flex and Early</i>	
<i>6DA 24UTR 3ST/4:30 (MOOSE)</i>									

LONG BEACH CONT. TER. (512)									
		DOCK WORK	7/6/26 6:00PM	LB 24	EO	7/6/26 11:59AM	LA	N	3
<i>1DA 2CT/5:30 (DUENEZ)</i>									

		DOCK WORK	7/6/26 3:00AM	LB 24	EO	7/6/26 12:00PM	LA	N	4
<i>4CT/2:30 (DUENEZ)</i>									

		DOCK WORK RAILS	7/6/26 5:00PM	LB 24	EO	7/6/26 12:01PM	LA	N	32
								<i>Flex and Early</i>	
<i>1DA 7KDA 24UTR (DUENEZ)</i>									

TRAPAC (514)									

Type Of Orders : Extra Order

Work Date: 7/6/26

Ver	Alc#	Ship Name	Start Time	Berth	Type	Received Date/Time	Tags	Mod Status	Tota Jobs
Shift : 2									
TRAPAC (514)									
		DOCK WORK RAILS	7/6/26 5:00PM	136	EO	7/6/26 12:29PM	LA	N	3
3DA		(MOOSE)							<i>Flex and Early</i>

		DOCK WORK	7/6/26 6:00PM	136	EO	7/6/26 12:29PM	LA	N	3
IDS 1HL 1ST/5:30		(MOOSE)							

		DOCK WORK	7/6/26 5:00PM	136	EO	7/6/26 12:30PM	LA	N	11
3DS 1DA 6CT/4:30 1ST/4:30		(MOOSE)							<i>Flex and Early</i>

APM TERMINALS (515)									
		DOCK WORK	7/6/26 5:00PM	TI 400	EO	7/6/26 12:03PM	LA	D	16
1DA 3CT/4:30 8UTR 1ST/4:30 3GAT		(DUENEZ)							<i>Flex and Early</i>

		DOCK WORK	7/6/26 6:00PM	TI 400	EO	7/6/26 12:04PM	LA	N	2
2CT/5:30		(DUENEZ)							

		DOCK WORK	7/6/26 3:00AM	TI 400	EO	7/6/26 12:05PM	LA	N	6
6CT/2:30		(DUENEZ)							

		DOCK WORK RAILS	7/6/26 5:00PM	TI 400	EO	7/6/26 12:05PM	LA	D	29
5KDA 23UTR 1ST/4:30		(DUENEZ)							<i>Flex and Early</i>

P.C.M.C. (517)									
		DOCK WORK	7/6/26 2:00AM	TI 400	EO	7/6/26 11:58AM	LA	N	1
1MWT		(DUENEZ)							<i>Flex and Early</i>

		DOCK WORK	7/6/26 5:00PM	LB 22	EO	7/6/26 12:33PM	LA	N	1
1MWT		(MOOSE)							<i>Flex and Early</i>

Type Of Orders : Extra Order

Work Date: 7/6/26

Ver Alc#	Shid Name	Start Time	Berth	Type	Received Date/Time	Tags	Mod Status	Tota Jobs
Shift : 2								
EVERPORT TERMINAL SERVICES (524)								
	DOCK WORK	7/6/26 5:00PM	TI 233	EO	7/6/26 12:32PM	LA	N	42
11DS 4DA 19CT/4:30 2HL 6UTR								Flex and Early
(MOOSE)								
<hr/>								
PACIFIC TERMINAL SERVICES CO. (525)								
	DOCK WORK	7/6/26 6:00PM	TI 211	EO	7/6/26 12:33PM	LA	N	1
IDWD								
(MOOSE)								
<hr/>								

AVERAGE REPORT
For Night Shift

	6/29/202	6/30/202	7/1/2026	7/2/2026	7/3/2026	7/4/2026	7/5/2026
	Mon	Tue	Wed	Thu	Fri	Sat	Sun
Container	0	0	0	0	0	0	0
Lashing	0	0	0	0	0	0	0
Primary	189	197	205	8	16	22	22
Secondary	153	161	169	8	10	10	18
Hold	167	175	179	8	16	18	20
Dock	142	142	150	0	8	16	18
Jitney	126	134	142	0	7	15	16
Winch	155	163	171	0	8	16	20
Carpenter	132	135	141	0	8	9	17
A-Crane	167	175	183	8	16	22	22
Casual	118	119	123	8	11	18	18
Swamper	114	120	120	0	8	16	16
B-Crane	182	190	198	0	8	16	24
A-UTR	171	179	180	8	9	17	18
B_UTR	183	189	197	8	16	24	24
Mechanics	146	154	154	0	8	9	9
Night ID	164	164	172	8	16	24	24
Steady	0	0	0	0	0	0	0
Ship Gang	0	0	0	0	0	0	0
Dock Gang	0	0	0	0	0	0	0