



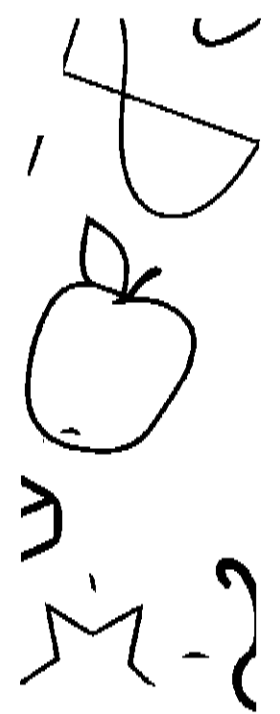
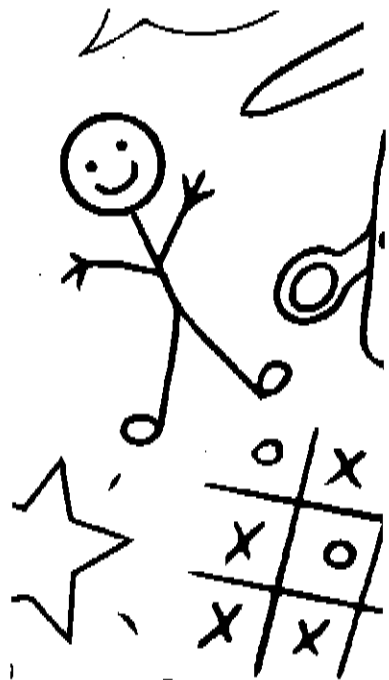
ILWU Local 13



Backpack and School Supply Drive

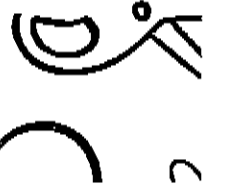
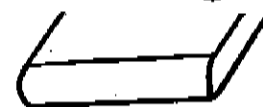
Supplies Needed

- Backpacks
- Pens and Pencils
- Notebooks
- Ruled Paper
- 3 Ring Binders
- Crayons and Markers



Backpacks Can Be Donated at the Dispatch Hall
and Local 13 Office

Month of July!!!



Monetary Donations To Buy Supplies Can Be
Made At Dues Window of Local 13 Office



International Longshore and Warehouse Union

Bulletin



ILWU Local 13 • 630 Centre Street • San Pedro, CA 90731 • (310) 830-6116



Bulletin #37-26

July 2, 2026

PROPOSED AMENDMENTS FOR LOCAL 13 CONSTITUTION

In this upcoming election, members will be asked to vote on twelve (12) amendments to the Local 13 Constitution. Much of the language in the Constitution dates back to the founding of Local 13. In the decades since, the law and Local 13's interpretation of various provisions have undergone many changes. The following proposed amendments aim to reflect this:

1. *Article IV(1)(F) – Nomination of Officers*

Change To: In order to have his name placed on the ballot and to hold any office or position, each candidate must have been in good standing and must have worked at least one (1) shift a month as a ~~an~~ active Longshoreman in the industry in this Local or have been working for the ILWU for the previous twelve (12) months. The work requirement ~~This is~~ not applicable to men injured ~~in the industry~~ or otherwise disabled during the previous twelve (12) months.

Reason for change: Clarification of work requirement and revision to treat industrial and non-industrial disability in the same way.

2. *Article V(1)(F) – Election of Officers*

Change To: A person cannot be a candidate for more than one paid office or paid position at the same time.

Reason for change: Clarification of existing understanding of the meaning of the language.

3. *Article VIII(2) – Vacancy of Salaried Office*

Change To: Any Elective Salaried Officer, Employee, or Committeeman who absents himself three (3) consecutive times without sufficient cause from the duties and meeting assigned to him or whose conduct is detrimental to the organization, shall have his position declared vacant by the Presiding Officer and, pending notice and hearing on the charges before the Grievance or Trial Committee, he shall not hold any position in the Local for one (1) year.

Reason for change: To align with legal requirements.

4. *Article X(1)(A) – Membership Applications*

Change To: Applicants for membership in this Union must be qualified to perform the duties necessary for general longshore work; shall be of good moral character and ~~have no serious physical defects which may prove~~ must not be a hazard to himself or his fellow workers. He must be eighteen (18) years of age ~~and must be eligible to citizenship under the laws of the United States.~~

Reason for change: To align with modern standards of equal treatment.

5. *Article X(2) – Membership Applications*

Change To: Any officer or agent, or former officer or agent of a Corporation or Association of Employers, ~~or a deputized city, county or special police,~~ or men proven to be members ~~of,~~ or former members of vigilante groups, shall be prohibited to membership in this Union.

Reason for change: To allow former police officers membership.

6. *Article XI(1)(A) – Dues, Fines and Assessments*

Change To: ~~All fines, assessments or other indebtedness must be paid before your dues will be accepted.~~

Reason for change: To align with legal requirements.

7. *Article XI(1)(C) – Dues, Fines and Assessments*

Change To: Example – (The delinquent date is the 15th day of the month following the month the dues, fines, assessments or other indebtedness were accrued. In months where the 15th falls on a Saturday, Sunday, or Holiday, the delinquent date will be the first Monday after the 15th of the month.)

Reason for change: Clarification of existing understanding of the meaning of the language.

8. *Article XII(1)(A) – Reinstating Members and Withdrawals*

Change To: ~~Members wishing a withdrawal card must be paid up to date with their dues, fines, assessments or other indebtedness for the current month and must intend to quit all work under our jurisdiction. Members wishing a withdrawal card are still liable for their dues, fines, assessments or other indebtedness up to the current month of withdrawal.~~

Reason for change: To align with legal requirements.

9. *Article XII(1)(B) – Reinstating Members and Withdrawals*

Change To: ~~Those holding withdrawal cards, who do any longshore or waterfront work subject to our jurisdiction, shall be liable to all dues, fines and assessments from the date of issue of withdrawal card.~~

Reason for change: To align with legal requirements.

10. *Article XII(1)(F) – Reinstating Members and Withdrawals*

Change To: ~~No member shall be given a withdrawal card unless he has been an active member in the Local for the past twelve (12) months.~~

Reason for change: To align with legal requirements.

11. *Article XII(1)(G) – Reinstating Members and Withdrawals*

Change To: ~~Withdrawals shall not be issued three (3) months prior to date of termination of the longshore agreement.~~

Reason for change: To align with legal requirements.

12. *Article XII(1)(H) – Reinstating Members and Withdrawals*

Change To: ~~Withdrawals shall not be honored until six (6) months after termination of any strike or lockout.~~

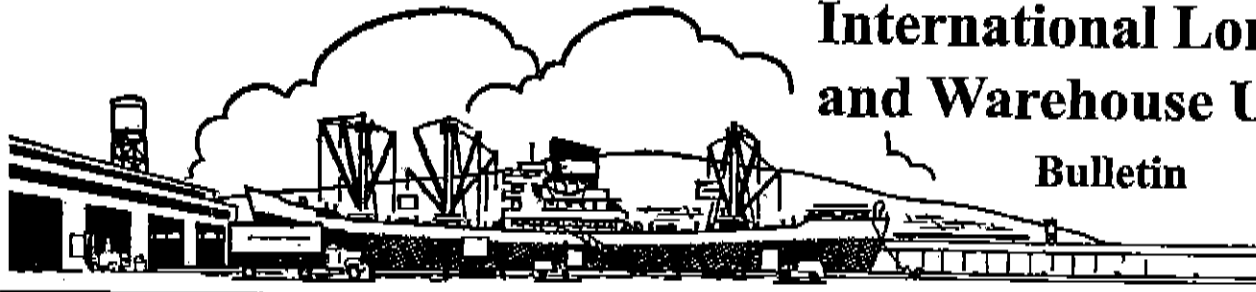
Reason for change: To align with legal requirements.

Fraternally,

Mario Medina
President

Brandi Good
Vice President

Gabriel “Big Gabe” Zuniga
Secretary/Treasurer



International Longshore and Warehouse Union

Bulletin



ILWU Local 13 • 630 Centre Street • San Pedro, CA 90731 • (310) 830-6116



Bulletin #36-26

June 26, 2026

ATTENTION ALL CLASS B's

Beginning with the job you pick-up at the Dispatch Hall on **Saturday, June 27, 2026:** ID's will have comebacks on UTRs, General Cargo and Bulk Cargo ONLY.

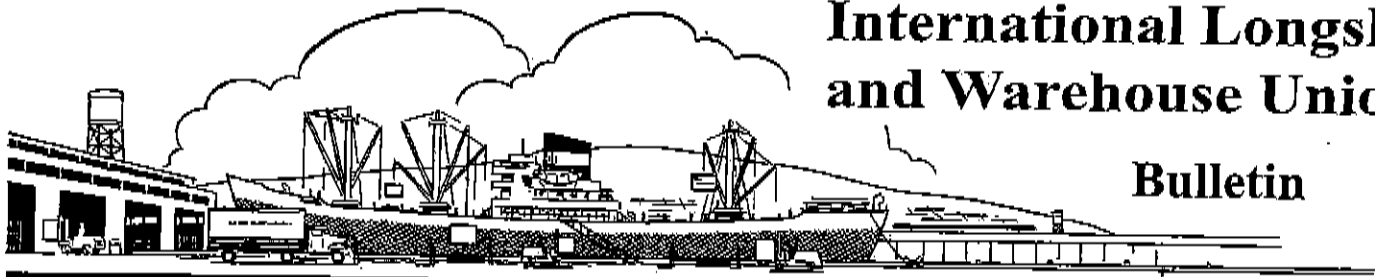
Please note: Comebacks will be on a month-to-month trial (*as manpower is needed*).

Class B IDs that are CY certified will continue to be ONE-DAY ONLY on all jobs.

Fraternally,
Mario Medina
President

Brandi Good
Vice President

Gabriel "Big Gabe" Zuniga
Secretary/Treasurer



I L W U Local 13 • 630 Centre Street • San Pedro, CA 90731 • (310) 830-1130

Bulletin #33-26

June 10, 2026

CHECK YOUR DUCKET AT THE WINDOW

REMINDER:

All members are responsible for checking their work ducket at the dispatch window before walking away.

What does that mean? First and foremost, make sure it is your registration number on that ducket. Once you leave the window, that job is now yours. (See Dispatch Rules under "Flops" #5: *During the dispatch period, any member wishing to flop must do so before leaving the dispatch window. Once leaving the window with a job and/or the next number has been called, the member is obligated to report to the job, call a replacement, and work until the replacement arrives.*)

Keep in mind, companies are not accepting duckets that have work numbers scratched off or duckets that have a work number printed on it that does not match the member checking in.

Fraternally,

Mario Medina
President

Brandi Good
Vice President

Gabriel "Big Gabe" Zuniga
Secretary/Treasurer

Job Forecast Report

WorkDate: 7/8/2026

Shift: Day

7/7/2026 3:22:51PM

Gangs	Shorted	Early	MO	EO	MRO	RO	LM	Total
Container Gang	0	0	0	0	0	0	0	0
Lashing Gang	0	0	0	0	0	0	0	0
4002_Gang	0	0	0	0	0	0	0	0
4012_Gang	0	0	0	0	0	0	0	0
4112_Gang	0	0	2	0	0	0	0	2
D4	0	0	0	0	0	0	0	0
	0	0	2	0	0	0	0	2

Boards	Shorted	Early	MO	EO	MRO	RO	LM	Total
Hold	0	141	228	0	54	0	0	423
Crane	0	32	12	3	1	0	0	48
Crane Top Handler	0	0	0	0	0	0	0	0
Winch	0	1	5	0	0	0	0	6
Key Hold	0	0	3	0	0	0	0	3
Jitney	0	4	26	3	1	0	0	34
UTR	0	68	300	13	29	0	0	410
CY	0	21	81	1	0	0	0	103
Lumber	0	0	0	0	0	0	0	0
Carpenter	0	0	0	0	1	0	0	1
Swamper	0	60	21	11	5	0	0	97
Casual	0	0	2	0	0	0	0	2
Dock	0	38	7	11	1	0	0	57
Mechanics	0	2	0	0	0	0	0	2
Gear	0	3	0	0	0	0	0	3
	0	370	685	42	92	0	0	1,189

Number of flops (UTR - UTRWork = Flops): 300

WED DAY
FINAL

S
48
47

Gangs Dispatched

Gang	Type	Workdate	Shift	Company	Ship	Berth
13	S-4112	7/8/2026 8:00:00AM	1	P.S.T.	SAGA ANDORINHA	176
10	S-4112	7/8/2026 8:00:00AM	1	P.S.T.	SAGA ANDORINHA	176

Alc. #	Start Time	Order Type	Ship Name	Company	Berth	Tags
1	8:00AM <i>13S 1KDP</i>	MRO	CSCL INDIAN OCEAN	LBCT	LB 24	LA
2	8:00AM <i>1CPWT</i>	MRO	BBC GENOA	SSA	LB 206	GE-
3	8:00AM <i>1CLW</i>	MRO	COLUMBIA	CCMW	LB 122	LA LU
4	8:00AM Cancelled	MRO	ONE HANNOVER	TP	136	LA
5	8:00AM Cancelled	MRO	OOCL BAUHINIA	LBCT	LB 22	LA
6	8:00AM <i>8S 3DS 9UTR 5UTRS</i>	MRO	COSCO SHIPPING PEONY	SSA	LB 245	LA
7	8:00AM Cancelled	MRO	COSCO OCEANIA	SSA	LB 266	LA
8	8:00AM <i>3UTR</i>	MRO	ONE FOCUS	ITS	LB 236	LA
9	8:00AM <i>5S 1HH/7:30 1UTR</i>	MRO	MSC BARI	TTI	LB 140	LA
10	7:00AM Cancelled	MRO	HMM TOPAZ	APM	TI 400	LA
						<i>Early Dispatch</i>
11	8:00AM <i>9S</i>	MRO	CMA CGM MUSCA	FMS	TI 303	LA
12	7:00AM <i>4S</i>	MRO	MISSOURI EXPRESS	APM	TI 400	LA
						<i>Early Dispatch</i>
13	7:00AM <i>8S 3KDP</i>	MRO	SEASPAN GANGES	APM	TI 400	LA
						<i>Early Dispatch</i>
14	8:00AM <i>6S 1UTRS</i>	MRO	SM LONG BEACH	SSA	LB 96	LA

Alc. #	Time	Type	Ship Name	Company	Berth	Days
15 Cancelled	8:00AM	MRO	TOSCANA	SSA	LB 205	LA RO
16 Cancelled	8:00AM	MRO	OOCL BRUSSELS	LBCT	LB 26	LA
17 Cancelled	8:00AM	MRO	YM UNIFORMITY	PA	100	LA
18 Cancelled	8:00AM	MRO	YM MATURITY	TP	136	LA
19 Cancelled	8:00AM	MRO	GANGES <i>13S 2DS 10UTR</i>	ITS	LB 232	LA
20 Cancelled	7:00AM	MO	MSC MONICA CRISTINA	TTI	LB 140	LA
<i>Flex and Early</i>						
21 Cancelled	8:00AM	MO	MSC MONICA CRISTINA	TTI	LB 140	LA
22 Cancelled	7:00AM	MO	CSCL INDIAN OCEAN <i>IS 1KDP</i>	LBCT	LB 24	LA
<i>Flex and Early</i>						
23 Cancelled	8:00AM	MO	CSCL INDIAN OCEAN	LBCT	LB 24	LA
24 Cancelled	8:00AM	MO	BBC GENOA	SSA	LB 206	GE
25 Cancelled	7:00AM	MO	ONE HANNOVER	TP	136	LA
<i>Flex and Early</i>						
26 Cancelled	8:00AM	MO	ONE HANNOVER <i>6S 12SL 1DS</i>	TP	136	LA
27 Cancelled	7:00AM	MO	OOCL BAUHINIA	LBCT	LB 22	LA
<i>Flex and Early</i>						
28 Cancelled	7:00AM	MO	COSCO SHIPPING PEONY	SSA	LB 245	LA
<i>Flex and Early</i>						
29 Cancelled	8:00AM	MO	COSCO SHIPPING PEONY	SSA	LB 245	LA

Alc. #	Time	Type	Ship Name	Company	Berth	ags
30	8:00AM 4S	MO	SAGA ANDORINHA	P.S.T.	176	GE *13*10*
31	8:00AM 4D 1CMK/7:30 10HL	MO	SAGA ANDORINHA	P.S.T.	176	GE
32	8:00AM 16SL 1DA 1UTR	MO	COSCO OCEANIA	SSA	LB 266	LA
33	7:00AM Cancelled	MO	ONE FOCUS	ITS	LB 236	LA
<i>Flex and Early</i>						
34	8:00AM Cancelled	MO	ONE FOCUS	ITS	LB 236	LA
35	7:00AM Cancelled	MO	MSC BARI	TTI	LB 140	LA
<i>Flex and Early</i>						
36	8:00AM Cancelled	MO	MSC BARI	TTI	LB 140	LA
37	7:00AM 3UTRS	MO	HMM TOPAZ	APM	TI 400	LA
<i>Flex and Early</i>						
38	8:00AM 1S	MO	HMM TOPAZ	APM	TI 400	LA
39	7:00AM 2S 2DS 3UTR	MO	CAPE KORTIA	TTI	LB 140	LA
<i>Flex and Early</i>						
40	8:00AM 8S 15UTR 6ST/7:30	MO	CAPE KORTIA	TTI	LB 140	LA
41	7:00AM Cancelled	MO	CMA CGM MUSCA	FMS	TI 303	LA
<i>Flex and Early</i>						
42	8:00AM 2HH/7:30	MO	CMA CGM MUSCA	FMS	TI 303	LA
43	7:00AM Cancelled	MO	MISSOURI EXPRESS	APM	TI 400	LA
<i>Flex and Early</i>						
44	8:00AM 1S	MO	MISSOURI EXPRESS	APM	TI 400	LA

Alc. #	Time	Type	Ship Name	Company	Berth	Flags
45 Cancelled	7:00AM	MO	SEASPAN GANGES	APM	TI 400	LA
<i>Flex and Early</i>						
46 4S	8:00AM	MO	SEASPAN GANGES	APM	TI 400	LA
47 12S 2DS 14UTR 2UTRS 6ST/7:30	8:00AM	MO	SM LONG BEACH	SSA	LB 96	LA
48 Cancelled	8:00AM	MO	TOSCANA	SSA	LB 205	LA RO
49 2S 2KDP	7:00AM	MO	OOCL BRUSSELS	LBCT	LB 26	LA
<i>Flex and Early</i>						
50 7S 1KDP	8:00AM	MO	OOCL BRUSSELS	LBCT	LB 26	LA
51 3CDAB/7:30 4PLMD	8:00AM	MO	SUPER NOVA	MET	LB 214	SH-All Comd
52 4HH/7:30	8:00AM	MO	YM UNIFORMITY	PA	100	LA
53 Cancelled	7:00AM	MO	YM MATURITY	TP	136	LA
<i>Flex and Early</i>						
54 Cancelled	8:00AM	MO	YM MATURITY	TP	136	LA
55 Cancelled	7:00AM	MO	GANGES	ITS	LB 232	LA
<i>Flex and Early</i>						
56 Cancelled	8:00AM	MO	GANGES	ITS	LB 232	LA
57 2CDAB/7:30 8PLMD	8:00AM	MO	CEMTEX ORIENT	MET	LB 212	SH-All Comd
58 Cancelled	7:00AM	MO	CMA CGM FLORIDA	FMS	TI 304	LA
<i>Flex and Early</i>						
59 12S 3DS 27UTR 10ST/7:30	8:00AM	MO	CMA CGM FLORIDA	FMS	TI 304	LA

Ale. #	Time	Type	Ship Name	Company	Berth	1 ags
60	8:00AM	MO	EVER MAGIC	ETS	TI 227	LA
	16S 4DS 32UTR 4UTRS 10ST/7:30					
61	7:00AM	MO	MSC TAMPICO	PA	102	LA
	Cancelled					
	<i>Flex and Early</i>					
62	8:00AM	MO	MSC TAMPICO	PA	102	LA
	16S 4DS 36UTR 8ST/7:30					
63	7:00AM	MO	WAN HAI A03	YTI	LB 214	LA
	6DS 1UTR					
	<i>Flex and Early</i>					
64	8:00AM	MO	WAN HAI A03	YTI	LB 214	LA
	20S 39UTR 13ST/7:30					
65	7:00AM	MO	CMA CGM LIBRA	FMS	TI 302	LA
	6S 30SL 3DS 4UTR					
	<i>Flex and Early</i>					
66	8:00AM	MO	CMA CGM LIBRA	FMS	TI 302	LA
	10S 1DS 32UTR 10ST/7:30					
67	8:00AM	MO	LAPIS ARROW	PA	198	LA AU
	3KH 32SD 7SL 1DS 2HT 1DWD 4CLW					
68	7:00AM	MO	PORTO	PA	126	LA
	4S 12SL 2DS 1UTR					
	<i>Flex and Early</i>					
69	8:00AM	MO	PORTO	PA	126	LA
	4S 14UTR 3ST/7:30					
70	7:00AM	MO	EVER LEGACY	APM	TI 400	LA
	16S 26SL 5KDP 2UTRS					
	<i>Flex and Early</i>					
71	8:00AM	MO	EVER LEGACY	APM	TI 400	LA
	Cancelled					
72	7:00AM	MO	HAWKI	TP	139	LA
	18SL 1DS 1UTR					
	<i>Flex and Early</i>					
73	8:00AM	MO	HAWKI	TP	139	LA
	12S 2DS 29UTR 5ST/7:30					
74	7:00AM	MO	NYK LAURA	YTI	TI 212	LA
	12SL 2DS 1DWD 1HL 1UTR					
	<i>Flex and Early</i>					

Alc. #	Time	Type	Ship Name	Company	Berth	Tags
75	8:00AM	MO	NYK LAURA	YTI	TI 212	LA
	<i>8S 15UTR 5ST/7:30</i>					
76	8:00AM	MO	MSC BARI	TTI	LB 140	LA
	Cancelled					
77	8:00AM	MO	CMA CGM MUSCA	FMS	TI 303	LA
	Cancelled					
78	8:00AM	MO	SM LONG BEACH	SSA	LB 96	LA
	<i>4S 1DS 7UTR 1UTRS 2ST/7:30</i>					
79	8:00AM	MO	CMA CGM FLORIDA	FMS	TI 304	LA
	Cancelled					
80	8:00AM	MO	EVER MAGIC	ETS	TI 227	LA
	<i>8S 2DS 16UTR 2UTRS 3ST/7:30</i>					
81	8:00AM	MO	WAN HAI A03	YTI	LB 214	LA
	<i>4S 8UTR</i>					
82	8:00AM	MO	CMA CGM LIBRA	FMS	TI 302	LA
	Cancelled					
83	8:00AM	MO	MATSON OAHU	SSA	LB 94	LA
	<i>4S 1DS 4UTR 2UTRS</i>					

Type Of Orders : Extra Order**Work Date: 7/8/26**

Ver	Alc#	Shio Name	Start Time	Berth	Type	Received Date/Time	Tags	Mod Status	Tota Jobs
Shift : 1									
STEVE. SERV. OF AMER (502)									
		DOCK WORK	7/8/26 7:00AM	LB 266	EO	7/7/26 1:06PM	LA	N	18
		<i>8DS 9CT/6:30 1UTR</i> <i>(big paul)</i>							<i>Flex and Early</i>

		DOCK WORK RAILS	7/8/26 7:00AM	LB 245	EO	7/7/26 1:07PM	LA	N	2
		<i>2DA</i> <i>(big paul)</i>							<i>Flex and Early</i>

		DOCK WORK	7/8/26 7:00AM	LB 94	EO	7/7/26 1:08PM	LA	D	9
		<i>5DS 3CT/6:30 1ST/6:30</i> <i>(big paul)</i>							<i>Flex and Early</i>

		DOCK WORK	7/8/26 8:00AM	LB 266	EO	7/7/26 1:08PM	LA	N	3
		<i>3DS</i> <i>(big paul)</i>							

		DOCK WORK	7/8/26 8:00AM	LB 205	EO	7/7/26 1:08PM	LA	D	2
		<i>1DA 1HL</i> <i>(big paul)</i>							

		DOCK WORK	7/8/26 8:00AM	LB 60	EO	7/7/26 1:46PM	LA	N	3
		<i>1DA 1HL 1UTR</i> <i>(big paul)</i>							

METROPOLITAN STEV. CO. (503)									
		DOCK WORK	7/8/26 7:00AM	LB 215	EO	7/7/26 1:14PM	SH-All Comd	N	3
		<i>3DSW</i> <i>(TONY D)</i>							<i>Flex and Early</i>

YUSEN TERMINALS INC. (504)									
		DOCK WORK	7/8/26 7:00AM	TI 214	EO	7/7/26 1:25PM	LA	N	16
		<i>8DS 6CT/6:30 1UTR 1ST/6:30</i> <i>(TONY D)</i>							<i>Flex and Early</i>

		DOCK WORK	7/8/26 8:00AM	TI 214	EO	7/7/26 1:26PM	LA	N	1
		<i>1DMSW</i> <i>(TONY D)</i>							

Type Of Orders : Extra Order**Work Date: 7/8/26**

Ver	Alc#	Ship Name	Start Time	Berth	Type	Received Date/Time	Tags	Mod Status	Tota Job:	
Shift : 1										
YUSEN TERMINALS INC. (504)										
		DOCK WORK RAILS	7/8/26 7:00AM	TI 214	EO	7/7/26 1:27PM	LA	N	3	
		2DA 1ST/6:30 (TONY D)							Flex and Early	
<hr/>										
PORTSAMERICA (505)										
		DOCK WORK	7/8/26 7:00AM	126	EO	7/7/26 1:35PM	LA	N	5	
		2DSW 1ST/6:30 2GAT (big paul)							Flex and Early	
<hr/>										
		DOCK WORK	7/8/26 8:00AM	126	EO	7/7/26 1:38PM	LA	N	11	
		1DA 1HL 9UTR (big paul)								
<hr/>										
		DOCK WORK RAILS	7/8/26 8:00AM	126	EO	7/7/26 1:39PM	LA	N	4	
		1DA 2UTR 1ST/7:30 (big paul)								
<hr/>										
TTI (507)										
		DOCK WORK	7/8/26 7:00AM	LB 140	EO	7/7/26 1:41PM	LA	N	23	
		3DS 1DA 7CT/6:30 8UTR 3ST/6:30 1GAT (big paul)							Flex and Early	
<hr/>										
		DOCK WORK	7/8/26 8:00AM	LB 140	EO	7/7/26 1:45PM	LA	N	4	
		4DS (big paul)								
<hr/>										
		DOCK WORK RAILS	7/8/26 7:00AM	LB 140	EO	7/7/26 1:45PM	LA	N	12	
		4DA 6UTR 2ST/6:30 (big paul)							Flex and Early	
<hr/>										
ITS (508)										
		DOCK WORK RAILS	7/8/26 7:00AM	LB 232	EO	7/7/26 1:55PM	LA	N	3	
		1DA 2UTR (big paul)							Flex and Early	
<hr/>										
		DOCK WORK	7/8/26 7:00AM	LB 232	EO	7/7/26 1:55PM	LA	D	13	
		5DS 2DA 1HL 3UTR 2ST/6:30 (big paul)							Flex and Early	

Type Of Orders : Extra Order**Work Date: 7/8/26**

Ver	Alc#	Ship Name	Start Time	Berth	Type	Received Date/Time	Tags	Mod Status	Tota Jobs
Shift : 1									
ITS (508)									
		DOCK WORK	7/8/26 8:00AM	LB 232	EO	7/7/26 1:56PM	LA	N	2
2DS <i>(big paul)</i>									
PASHA STEVADORE TERMINAL (509)									
		DOCK WORK RAILS	7/8/26 8:00AM	176	EO	7/7/26 12:30PM	LA	D	7
3DAW 3DA 1CDA/7:30 <i>(big paul)</i>									
FENIX MARINE SERVICES (510)									
		DOCK WORK	7/8/26 7:00AM	TI 302	EO	7/7/26 1:27PM	LA	N	35
9DS 2DA 7CT/6:30 15UTR 2ST/6:30 <i>(big paul)</i>									
		DOCK WORK RAILS	7/8/26 7:00AM	TI 302	EO	7/7/26 1:27PM	LA	N	1
IDA <i>(big paul)</i>									
LONG BEACH CONT. TER. (512)									
		DOCK WORK RAILS	7/8/26 7:00AM	LB 24	EO	7/7/26 1:14PM	LA	N	1
1UTR <i>(big paul)</i>									
TRAPAC (514)									
		DOCK WORK	7/8/26 7:00AM	136	EO	7/7/26 1:17PM	LA	N	1
1HL <i>(big paul)</i>									
		DOCK WORK	7/8/26 8:00AM	136	EO	7/7/26 1:19PM	LA	N	5
2DS 2RMG/7:30 1UTR <i>(big paul)</i>									
		DOCK WORK RAILS	7/8/26 7:00AM	136	EO	7/7/26 1:19PM	LA	N	1
IDA <i>(big paul)</i>									
APM TERMINALS (515)									

Type Of Orders : Extra Order**Work Date: 7/8/26**

Ver	Alc#	Ship Name	Start Time	Berth	Type	Received Date/Time	Tags	Mod Status	Tota Jobs
Shift : 1									
APM TERMINALS (515)									
		DOCK WORK RAILS	7/8/26 7:00AM	TI 400	EO	7/7/26 12:58PM	LA	N	4
		<i>1KDA 2UTR 1ST/6:30</i> <i>(big paul)</i>							<i>Flex and Early</i>

		DOCK WORK	7/8/26 7:00AM	TI 400	EO	7/7/26 12:58PM	LA	N	6
		<i>3DA 1HL 1UTR 1ST/6:30</i> <i>(big paul)</i>							<i>Flex and Early</i>

P.C.M.C. (517)									
		DOCK WORK	7/8/26 7:00AM	895 REVEO		7/7/26 1:59PM	LA	N	2
		<i>2MWT</i> <i>(big paul)</i>							<i>Flex and Early</i>

EVERPORT TERMINAL SERVICES (524)									
		DOCK WORK	7/8/26 7:00AM	TI 233	EO	7/7/26 1:09PM	LA	N	20
		<i>6DS 1DA 9UTR 4ST/6:30</i> <i>(big paul)</i>							<i>Flex and Early</i>

		DOCK WORK RAILS	7/8/26 7:00AM	TI 233	EO	7/7/26 1:10PM	LA	N	1
		<i>1UTR</i> <i>(big paul)</i>							<i>Flex and Early</i>

PACIFIC TERMINAL SERVICES CO. (525)									
		DOCK WORK	7/8/26 7:00AM	LB 108	EO	7/7/26 1:58PM	LA	N	5
		<i>1DA 2UTR 2ST/6:30</i> <i>(big paul)</i>							<i>Flex and Early</i>

AVERAGE REPORT
For Day Shift

	7/1/2026	7/2/2026	7/3/2026	7/4/2026	7/5/2026	7/6/2026	7/7/2026
	Wed	Thu	Fri	Sat	Sun	Mon	Tue
Container	0	0	0	0	0	0	0
Lashing	0	0	0	0	0	0	0
Primary	216	8	10	18	26	30	33
Secondary	177	0	0	8	16	24	32
Hold	189	8	9	17	25	27	35
Key Hold	130	0	0	0	0	0	8
Winch	168	0	0	8	8	16	20
Jitney	171	0	0	8	16	24	32
Dock	160	0	0	8	16	24	32
Lumber	168	0	0	0	0	0	0
Carpenter	134	8	8	8	8	16	16
A-Crane	196	8	11	19	22	22	30
Swamper	142	0	8	16	16	18	24
Casual	138	0	8	16	20	22	24
B-Crane	175	0	0	8	16	22	30
A-UTR	193	0	8	16	24	27	27
B_UTR	198	8	11	19	27	27	33
Mechanics	195	6	14	22	30	30	37
ID	178	8	14	22	24	24	30
Steady	0	0	0	0	0	0	0
Ship Gang	0	0	0	0	0	0	0
Dock Gang	0	0	0	0	0	0	0