



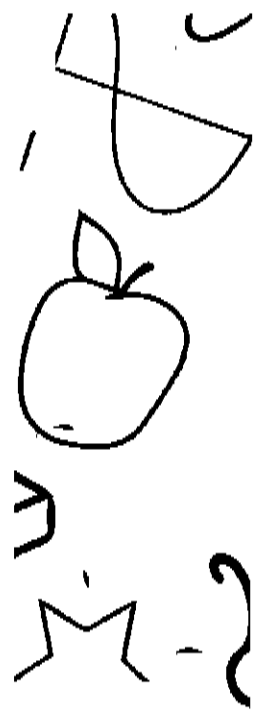
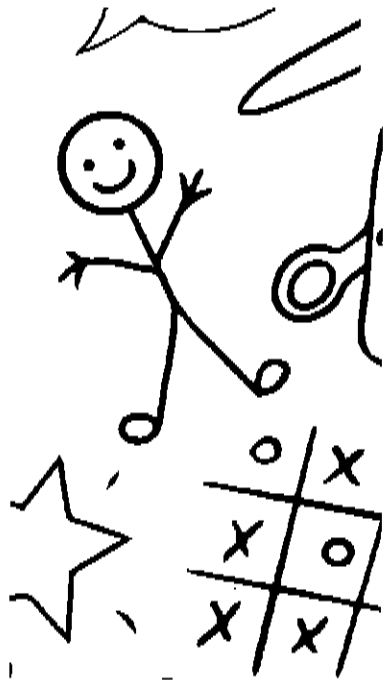
ILWU Local 13



Backpack and School Supply Drive

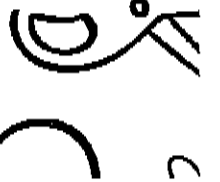
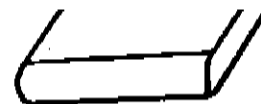
Supplies Needed

- Backpacks
- Pens and Pencils
- Notebooks
- Ruled Paper
- 3 Ring Binders
- Crayons and Markers



Backpacks Can Be Donated at the Dispatch Hall and Local 13 Office

Month of July!!!

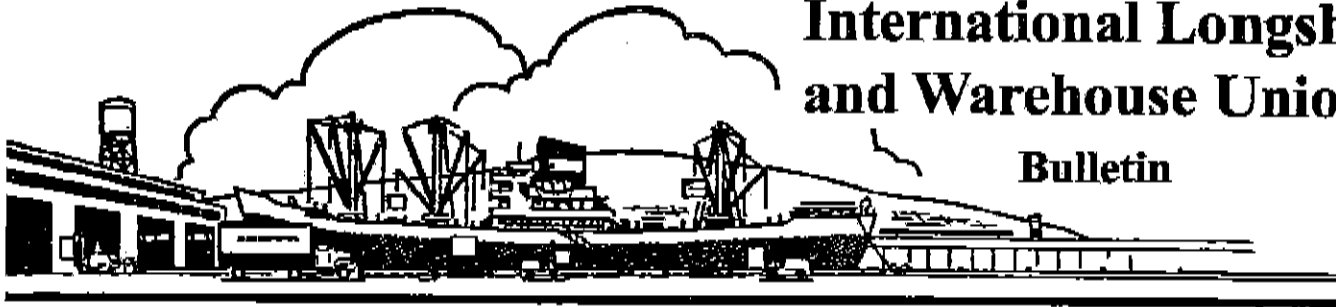


Monetary Donations To Buy Supplies Can Be Made At Dues Window of Local 13 Office



International Longshore and Warehouse Union

Bulletin



ILWU Local 13 • 630 Centre Street • San Pedro, CA 90731 • (310) 830-6116



Bulletin #37-26

July 2, 2026

PROPOSED AMENDMENTS FOR LOCAL 13 CONSTITUTION

In this upcoming election, members will be asked to vote on twelve (12) amendments to the Local 13 Constitution. Much of the language in the Constitution dates back to the founding of Local 13. In the decades since, the law and Local 13's interpretation of various provisions have undergone many changes. The following proposed amendments aim to reflect this:

1. *Article IV(1)(F) – Nomination of Officers*

Change To: In order to have his name placed on the ballot and to hold any office or position, each candidate must have been in good standing and must have worked at least one (1) shift a month as a ~~an active~~ Longshoreman in the industry in this Local or have been working for the ILWU for the previous twelve (12) months. The work requirement ~~This is not applicable to men injured in the industry~~ or otherwise disabled during the previous twelve (12) months.

Reason for change: Clarification of work requirement and revision to treat industrial and non-industrial disability in the same way.

2. *Article V(1)(F) – Election of Officers*

Change To: A person cannot be a candidate for more than one paid office or paid position at the same time.

Reason for change: Clarification of existing understanding of the meaning of the language.

3. *Article VIII(2) – Vacancy of Salaried Office*

Change To: Any Elective Salaried Officer, Employee, or Committeeman who absents himself three (3) consecutive times without sufficient cause from the duties and meeting assigned to him or whose conduct is detrimental to the organization, shall have his position declared vacant by the Presiding Officer and, pending notice and hearing on the charges before the Grievance or Trial Committee, he shall not hold any position in the Local for one (1) year.

Reason for change: To align with legal requirements.

4. *Article X(1)(A) – Membership Applications*

Change To: Applicants for membership in this Union must be qualified to perform the duties necessary for general longshore work; shall be of good moral character and ~~have no serious physical defects which may prove~~ must not be a hazard to himself or his fellow workers. He must be eighteen (18) years of age and ~~must be eligible to citizenship under the laws of the United States.~~

Reason for change: To align with modern standards of equal treatment.

5. *Article X(2) – Membership Applications*

Change To: Any officer or agent, or former officer or agent of a Corporation or Association of Employers, ~~or a deputized city, county or special police,~~ or men proven to be members of, or former members of vigilante groups, shall be prohibited to membership in this Union.

Reason for change: To allow former police officers membership.

6. *Article XI(1)(A) – Dues, Fines and Assessments*

Change To: ~~All fines, assessments or other indebtedness must be paid before your dues will be accepted.~~

Reason for change: To align with legal requirements.

7. *Article XI(1)(C) – Dues, Fines and Assessments*

Change To: Example – (The delinquent date is the 15th day of the month following the month the dues, fines, assessments or other indebtedness were accrued. In months where the 15th falls on a Saturday, Sunday, or Holiday, the delinquent date will be the first Monday after the 15th of the month.)

Reason for change: Clarification of existing understanding of the meaning of the language.

8. *Article XII(1)(A) – Reinstating Members and Withdrawals*

Change To: ~~Members wishing a withdrawal card must be paid up to date with their dues, fines, assessments or other indebtedness for the current month and must intend to quit all work under our jurisdiction. Members wishing a withdrawal card are still liable for their dues, fines, assessments or other indebtedness up to the current month of withdrawal.~~

Reason for change: To align with legal requirements.

9. *Article XII(1)(B) – Reinstating Members and Withdrawals*

Change To: ~~Those holding withdrawal cards, who do any longshore or waterfront work subject to our jurisdiction, shall be liable to all dues, fines and assessments from the date of issue of withdrawal card.~~

Reason for change: To align with legal requirements.

10. *Article XII(1)(F) – Reinstating Members and Withdrawals*

Change To: ~~No member shall be given a withdrawal card unless he has been an active member in the Local for the past twelve (12) months.~~

Reason for change: To align with legal requirements.

11. *Article XII(1)(G) – Reinstating Members and Withdrawals*

Change To: ~~Withdrawals shall not be issued three (3) months prior to date of termination of the longshore agreement.~~

Reason for change: To align with legal requirements.

12. *Article XII(1)(H) – Reinstating Members and Withdrawals*

Change To: ~~Withdrawals shall not be honored until six (6) months after termination of any strike or lockout.~~

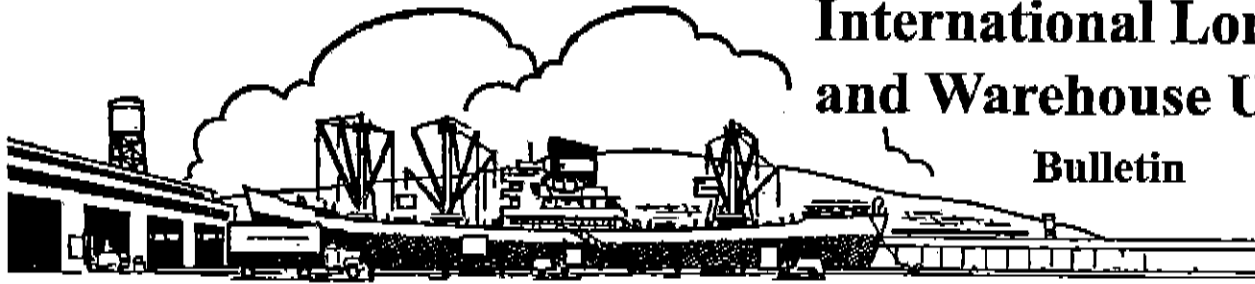
Reason for change: To align with legal requirements.

Fraternally,

Mario Medina
President

Brandi Good
Vice President

Gabriel "Big Gabe" Zuniga
Secretary/Treasurer



ILWU Local 13 • 630 Centre Street • San Pedro, CA 90731 • (310) 830-6116



Bulletin #36-26

June 26, 2026

ATTENTION ALL CLASS B's

Beginning with the job you pick-up at the Dispatch Hall on **Saturday, June 27, 2026:** ID's will have **comebacks on UTRs, General Cargo and Bulk Cargo ONLY.**

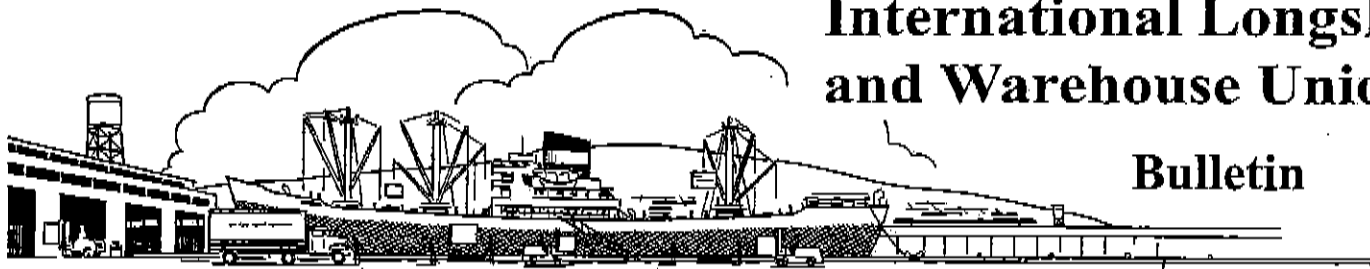
Please note: Comebacks will be on a month-to-month trial (*as manpower is needed*).

Class B IDs that are CY certified will continue to be **ONE-DAY ONLY** on all jobs.

Fraternally,
Mario Medina
President

Brandi Good
Vice President

Gabriel "Big Gabe" Zuniga
Secretary/Treasurer



International Longshore and Warehouse Union

Bulletin



I L W U Local 13 • 630 Centre Street • San Pedro, CA 90731 • (310) 830-1130

Bulletin #33-26

June 10, 2026

CHECK YOUR DUCKET AT THE WINDOW

REMINDER:

All members are responsible for checking their work ducket at the dispatch window before walking away.

What does that mean? First and foremost, make sure it is your registration number on that ducket. Once you leave the window, that job is now yours. (See Dispatch Rules under "Flops" #5: *During the dispatch period, any member wishing to flop must do so before leaving the dispatch window. Once leaving the window with a job and/or the next number has been called, the member is obligated to report to the job, call a replacement, and work until the replacement arrives.*)

Keep in mind, companies are not accepting duckets that have work numbers scratched off or duckets that have a work number printed on it that does not match the member checking in.

Fraternally,

Mario Medina
President

Brandi Good
Vice President

Gabriel "Big Gabe" Zuniga
Secretary/Treasurer

Job Forecast Report

WorkDate: 7/7/2026

Shift: Day

7/6/2026 4:18:16PM

Gangs	Shorted	Early	MO	EO	MRO	RO	LM	Total
Container Gang	0	0	0	0	0	0	0	0
Lashing Gang	0	0	0	0	0	0	0	0
4002_Gang	0	0	0	0	0	0	0	0
4012_Gang	0	0	0	0	0	0	0	0
4112_Gang	0	0	0	0	0	0	0	0
D4	0	0	0	0	0	0	0	0
	0	0	0	0	0	0	0	0

Boards	Shorted	Early	MO	EO	MRO	RO	LM	Total
Hold	0	163	185	0	60	0	0	408
Crane	0	33	2	1	2	0	0	38
Crane Top Handler	0	0	0	0	0	0	0	0
Winch	0	0	7	0	0	0	0	7
Key Hold	0	0	3	0	0	0	0	3
Jitney	0	3	26	4	2	0	0	35
UTR	0	78	171	2	47	0	0	298
CY	0	11	55	7	0	0	0	73
Lumber	0	0	2	0	0	0	0	2
Carpenter	0	0	1	0	0	0	0	1
Swamper	0	57	17	10	2	0	0	86
Casual	0	0	0	0	0	0	0	0
Dock	0	40	11	10	3	0	0	64
Mechanics	0	5	0	0	0	0	0	5
Gear	0	4	0	0	0	0	0	4
	0	394	480	34	116	0	0	1,024

Number of flops (UTR - UTRWork = Flops): 171

TUESDAY DAY FINAL
7/7/26

510
13
47

Alc. #	Start Time	Order Type	Ship Name	Company	Berth	Tags
1	8:00AM <i>7S 2UTR</i>	MRO	MSC MONICA CRISTINA	TTI	LB 140	LA
2	8:00AM <i>11S 1KDP</i>	MRO	CSCL INDIAN OCEAN	LBCT	LB 24	LA
3	7:00AM Cancelled	MRO	GUTHORM MAERSK	APM	TI 400	LA
<i>Early Dispatch</i>						
4	8:00AM <i>2HL</i>	MRO	BBC GENOA	SSA	LB 206	GE-
5	8:00AM Cancelled	MRO	ONE HANNOVER	TP	136	LA
6	8:00AM <i>2D 2UTR</i>	MRO	POCHARD	P.S.T.	176	GE-
7	8:00AM Cancelled	MRO	OOCL BAUHINIA	LBCT	LB 22	LA
8	8:00AM <i>2S 2DS 1UTR 3UTRS</i>	MRO	COSCO SHIPPING PEONY	SSA	LB 245	LA
9	8:00AM Cancelled	MRO	COSCO OCEANIA	SSA	LB 266	LA
10	7:00AM <i>2KDP</i>	MRO	COYHAIQUE	APM	TI 400	LA
<i>Early Dispatch</i>						
11	8:00AM Cancelled	MRO	ONE FOCUS	ITS	LB 236	LA
12	8:00AM <i>11S 2HH/7:30 19UTR</i>	MRO	MSC BARI	TTI	LB 140	LA
13	7:00AM Cancelled	MRO	HMM TOPAZ	APM	TI 400	LA
<i>Early Dispatch</i>						
14	8:00AM <i>15S 8UTR</i>	MRO	CMA CGM MUSCA	FMS	TI 303	LA

Alc. #	Time	Type	Ship Name	Company	Berth	Tags
15	7:00AM IS	MRO	MISSOURI EXPRESS	APM	TI 400	LA
<i>Early Dispatch</i>						
16	7:00AM 2S 1KDP	MRO	SEASPAN GANGES	APM	TI 400	LA
<i>Early Dispatch</i>						
17	8:00AM 6S 8SL 10UTR 2UTRS	MRO	KAIMANA HILA	SSA	LB 60	LA
18	7:00AM Cancelled	MO	MSC MONICA CRISTINA	TTI	LB 140	LA
<i>Flex and Early</i>						
19	8:00AM 14SL	MO	MSC MONICA CRISTINA	TTI	LB 140	LA
20	7:00AM IS 33SL 1KDP	MO	CSCL INDIAN OCEAN	LBCT	LB 24	LA
<i>Flex and Early</i>						
21	8:00AM Cancelled	MO	CSCL INDIAN OCEAN	LBCT	LB 24	LA
22	7:00AM Cancelled	MO	GUTHORM MAERSK	APM	TI 400	LA
<i>Flex and Early</i>						
23	8:00AM Cancelled	MO	GUTHORM MAERSK	APM	TI 400	LA
24	8:00AM 2S 2D 1CPWT 2UTR	MO	BBC GENOA	SSA	LB 206	GE
25	8:00AM 2S 4CLW	MO	COLUMBIA	CCMW	LB 122	LA LU
26	7:00AM Cancelled	MO	ONE HANNOVER	TP	136	LA
<i>Flex and Early</i>						
27	8:00AM 6S	MO	ONE HANNOVER	TP	136	LA
28	8:00AM 2S 1DWD	MO	CYMONA LIFE	PTSC	LB 232	SH-Cement
29	7:00AM Cancelled	MO	OOCL BAUHINIA	LBCT	LB 22	LA
<i>Flex and Early</i>						

Alc. #	Time	Type	Ship Name	Company	Berth	Tags
30	8:00AM	MO	COSCO SHIPPING PEONY	SSA	LB 245	LA
	8S 2DS 15UTR 2UTRS 6ST/7:30					

31	7:00AM	MO	COSCO OCEANIA	SSA	LB 266	LA
	Cancelled					
	<i>Flex and Early</i>					

32	8:00AM	MO	COSCO OCEANIA	SSA	LB 266	LA
	Cancelled					

33	7:00AM	MO	COYHAIQUE	APM	TI 400	LA
	2UTRS					
	<i>Flex and Early</i>					

34	8:00AM	MO	COYHAIQUE	APM	TI 400	LA
	2S					

35	7:00AM	MO	ONE FOCUS	ITS	LB 236	LA
	Cancelled					
	<i>Flex and Early</i>					

36	8:00AM	MO	ONE FOCUS	ITS	LB 236	LA
	Cancelled					

37	7:00AM	MO	MSC BARI	TTI	LB 140	LA
	Cancelled					
	<i>Flex and Early</i>					

38	8:00AM	MO	MSC BARI	TTI	LB 140	LA
	Cancelled					

39	7:00AM	MO	HMM TOPAZ	APM	TI 400	LA
	Cancelled					
	<i>Flex and Early</i>					

40	8:00AM	MO	HMM TOPAZ	APM	TI 400	LA
	1S					

41	8:00AM	MO	GEORGE II	SSA	LB 92	LA
	6S 1DS 1HL 7UTR 1UTRS 3ST/7:30					

42	8:00AM	MO	PRESTIGE ACE	PA	WI 198	LA
	3KH 34SD 7SL 1DS 2HT 1DWD 5CLW					

43	7:00AM	MO	CMA CGM MUSCA	FMS	TI 303	LA
	Cancelled					
	<i>Flex and Early</i>					

44	8:00AM	MO	CMA CGM MUSCA	FMS	TI 303	LA
	2ST/7:30					

Alc. #	Time	Type	Ship Name	Company	Berth	Tags
45	7:00AM 8S 18SL 2KDP	MO	MISSOURI EXPRESS	APM	TI 400	LA
<i>Flex and Early</i>						
46	8:00AM 2S	MO	MISSOURI EXPRESS	APM	TI 400	LA
47	7:00AM 12S 3KDP	MO	SEASPAN GANGES	APM	TI 400	LA
<i>Flex and Early</i>						
48	8:00AM 2S	MO	SEASPAN GANGES	APM	TI 400	LA
49	8:00AM 1HL	MO	KAIMANA HILA	SSA	LB 60	LA
50	8:00AM 8S 2DS 1HL 14UTR 2UTRS 6ST/7:30	MO	SM LONG BEACH	SSA	LB 96	LA
51	8:00AM 12S 8DA 2HT 1DWD 14HLW	MO	TOSCANA	SSA	LB 205	LA RO
52	7:00AM 6S 2KDP	MO	OOCL BRUSSELS	LBCT	LB 26	LA
<i>Flex and Early</i>						
53	8:00AM 4S 1KDP 2UTRS	MO	OOCL BRUSSELS	LBCT	LB 26	LA
54	8:00AM Cancelled	MO	SUPER NOVA	MET	LB 214	SH-All Comd
55	7:00AM 10S 24SL 5DS 2UTR	MO	YM UNIFORMITY	PA	100	LA
<i>Flex and Early</i>						
56	8:00AM 10S 48UTR 11ST/7:30	MO	YM UNIFORMITY	PA	100	LA
57	7:00AM 24SL 1DS 1UTR	MO	YM MATURITY	TP	136	LA
<i>Flex and Early</i>						
58	8:00AM 10S 3DS 7UTR 2ST/7:30	MO	YM MATURITY	TP	136	LA
59	7:00AM 2S 22SL 1DS 1HL 1UTRS	MO	MATSON OAHU	SSA	LB 94	LA
<i>Flex and Early</i>						

Alc. #	Time	Type	Ship Name	Company	Berth	Tags
60	8:00AM	MO	MATSON OAHU	SSA	LB 94	LA
	<i>18S 3DS 28UTR 3UTRS 12ST/7:30</i>					
61	9:00AM	MO	GANGES	ITS	LB 232	LA
	<i>14S 3DS 31UTR 10ST/8:30</i>					
62	8:00AM	MO	GANGES	ITS	LB 232	LA
	<i>2S 16SL 1DS 1UTR</i>					
63	8:00AM	MO	CEMTEX ORIENT	MET	LB 212	SH-All Comd
	Cancelled					
64	8:00AM	MO	MSC BARI	TTI	LB 140	LA
	Cancelled					
65	8:00AM	MO	CMA CGM MUSCA	FMS	TI 303	LA
	Cancelled					
66	8:00AM	MO	YM UNIFORMITY	PA	100	LA
	Cancelled					
67	8:00AM	MO	MATSON OAHU	SSA	LB 94	LA
	<i>5S 1DS 2HH/7:30 7UTR 1UTRS 3ST/7:30</i>					
68	7:00AM	MO	CMA CGM FLORIDA	FMS	TI 304	LA
	Cancelled					
						<i>Flex and Early</i>
69	8:00AM	MO	CMA CGM FLORIDA	FMS	TI 304	LA
	Cancelled					
70	8:00AM	MO	CMA CGM FLORIDA	FMS	TI 304	LA
	Cancelled					

Type Of Orders : Extra Order

Work Date: 7/7/26

Ver	Alc#	Ship Name	Start Time	Berth	Type	Received Date/Time	Tags	Mod Status	Tota Jobs
Shift : 1									
STEVE. SERV. OF AMER (502)									
		DOCK WORK	7/7/26 7:00AM	LB 266	EO	7/6/26 1:16PM	LA	N	16
		<i>7DS 6CT/6:30 1UTR 2ST/6:30 (HULK)</i>							<i>Flex and Early</i>

		DOCK WORK RAILS	7/7/26 7:00AM	LB 245	EO	7/6/26 1:40PM	LA	N	4
		<i>2DA 2UTR (HULK)</i>							<i>Flex and Early</i>

		DOCK WORK	7/7/26 7:00AM	LB 94	EO	7/6/26 1:40PM	LA	D	9
		<i>5DS 4CT/6:30 (HULK)</i>							<i>Flex and Early</i>

		DOCK WORK RAILS	7/7/26 7:00AM	LB 94	EO	7/6/26 1:41PM	LA	N	12
		<i>3DA 7UTR 2ST/6:30 (HULK)</i>							<i>Flex and Early</i>

		DOCK WORK	7/7/26 8:00AM	LB 266	EO	7/6/26 1:41PM	LA	N	2
		<i>2DS (HULK)</i>							

		DOCK WORK	7/7/26 8:00AM	LB 94	EO	7/6/26 1:43PM	LA	N	5
		<i>5ST/7:30 (HULK)</i>							

		DOCK WORK	7/7/26 7:00AM	LB 60	EO	7/6/26 1:59PM	LA	N	3
		<i>1DA 1HL 1UTR (TONY D)</i>							<i>Flex and Early</i>

		DOCK WORK	7/7/26 8:00AM	LB 60	EO	7/6/26 2:00PM	LA	N	1
		<i>1UTR (TONY D)</i>							

		DOCK WORK AUTO LOT	7/7/26 8:00AM	LB 60	EO	7/6/26 2:00PM	LA	N	12
		<i>8DAL 2HL 2CL (TONY D)</i>							

METROPOLITAN STEV. CO. (503)

Type Of Orders : Extra Order

Work Date: 7/7/26

Ver	Alc#	Ship Name	Start Time	Berth	Type	Received Date/Time	Tags	Mod Status	Tota Jobs
Shift : 1									
METROPOLITAN STEV. CO. (503)									
		DOCK WORK	7/7/26 7:00AM	LB 215	EO	7/6/26 1:34PM	SH-All Comd	N	1
		<i>1DSW</i> (TONY D)							<i>Flex and Early</i>

		DOCK WORK RAILS	7/7/26 8:00AM	LB 213	EO	7/6/26 1:35PM	SH-All Comd	N	3
		<i>2D 1CDAB/7:30</i> (TONY D)							

YUSEN TERMINALS INC. (504)									
		DOCK WORK	7/7/26 7:00AM	TI 214	EO	7/6/26 12:51PM	LA	D	16
		<i>10DS 5UTR 1ST/6:30</i> (HULK)							<i>Flex and Early</i>

		DOCK WORK RAILS	7/7/26 7:00AM	TI 214	EO	7/6/26 12:52PM	LA	N	4
		<i>1DA 2UTR 1ST/6:30</i> (DUENEZ)							<i>Flex and Early</i>

PORTSAMERICA (505)									
		DOCK WORK	7/7/26 7:00AM	WIL 198	EO	7/6/26 1:25PM	LA	N	1
		<i>1GNT</i> (HULK)							<i>Flex and Early</i>

		DOCK WORK	7/7/26 7:00AM	126	EO	7/6/26 1:27PM	LA	N	5
		<i>2DS 3CT/6:30</i> (HULK)							<i>Flex and Early</i>

		DOCK WORK	7/7/26 8:00AM	126	EO	7/6/26 1:30PM	LA	N	1
		<i>1UTR</i> (HULK)							

TTI (507)									
		DOCK WORK	7/7/26 7:00AM	LB 140	EO	7/6/26 1:27PM	LA	N	1
		<i>1ST/6:30</i> (TONY D)							<i>Flex and Early</i>

		DOCK WORK	7/7/26 8:00AM	LB 140	EO	7/6/26 1:28PM	LA	N	3
		<i>3DS</i> (TONY D)							

Type Of Orders : Extra Order**Work Date: 7/7/26**

Ver	Alc#	Ship Name	Start Time	Berth	Type	Received Date/Time	Tags	Mod Status	Tota Jobs
Shift : 1									
TTI (507)									
		DOCK WORK RAILS	7/7/26 7:00AM	LB 140	EO	7/6/26 1:32PM	LA	N	18
		<i>6DA 12UTR</i> <i>(TONYD)</i>							<i>Flex and Early</i>
ITS (508)									
		DOCK WORK	7/7/26 7:00AM	LB 232	EO	7/6/26 1:31PM	LA	N	21
		<i>7DS 2DA 4CT/6:30 1HL 7UTR</i> <i>(HULK)</i>							<i>Flex and Early</i>
3DS (HULK)									
		DOCK WORK	7/7/26 8:00AM	LB 232	EO	7/6/26 1:32PM	LA	N	3
4DA 8UTR (HULK)									
		DOCK WORK RAILS	7/7/26 7:00AM	LB 232	EO	7/6/26 1:39PM	LA	N	12
PASHA STEVADORE TERMINAL (509)									
		DOCK WORK	7/7/26 8:00AM	179	EO	7/6/26 2:55PM	LA	N	1
		<i>1ST/7:30</i> <i>(TONYD)</i>							
FENIX MARINE SERVICES (510)									
		DOCK WORK	7/7/26 7:00AM	TI 302	EO	7/6/26 1:47PM	LA	N	19
		<i>8DS 9UTR 2ST/6:30</i> <i>(HULK)</i>							<i>Flex and Early</i>
1DA (HULK)									
		DOCK WORK RAILS	7/7/26 7:00AM	TI 302	EO	7/6/26 1:48PM	LA	N	1
LONG BEACH CONT. TER. (512)									
		DOCK WORK	7/7/26 7:00AM	LB 24	EO	7/6/26 12:50PM	LA	N	3
		<i>2CT/6:30 1GAT</i> <i>(DUENEZ)</i>							<i>Flex and Early</i>

Type Of Orders : Extra Order

Work Date: 7/7/26

Ver	Alc#	Ship Name	Start Time	Berth	Type	Received Date/Time	Tags	Mod Status	Tota Jobs	
Shift : 1										
LONG BEACH CONT. TER. (512)										
		DOCK WORK RAILS	7/7/26 7:00AM	LB 24	EO	7/6/26 12:51PM	LA	N	4	
		4UTR (DUENEZ)								Flex and Early
<hr/>										
TRAPAC (514)										
		DOCK WORK	7/7/26 7:00AM	136	EO	7/6/26 1:33PM	LA	N	1	
		1DS (TONY D)								Flex and Early
<hr/>										
		DOCK WORK	7/7/26 8:00AM	136	EO	7/6/26 1:34PM	LA	N	3	
		2DS 1ST/7:30 (TONY D)								
<hr/>										
APM TERMINALS (515)										
		DOCK WORK	7/7/26 7:00AM	TI 400	EO	7/6/26 1:18PM	LA	N	7	
		4DA 2CT/6:30 1UTR (HULK)								Flex and Early
<hr/>										
		DOCK WORK RAILS	7/7/26 7:00AM	TI 400	EO	7/6/26 1:19PM	LA	N	15	
		2KDA 12UTR 1ST/6:30 (HULK)								Flex and Early
<hr/>										
P.C.M.C. (517)										
		DOCK WORK	7/7/26 7:00AM	TI 400	EO	7/6/26 1:11PM	LA	N	5	
		5MWT (TONY D)								Flex and Early
<hr/>										
EVERPORT TERMINAL SERVICES (524)										
		DOCK WORK	7/7/26 7:00AM	TI 233	EO	7/6/26 1:03PM	LA	N	22	
		10DS 12CT/6:30 (HULK)								Flex and Early
<hr/>										
PACIFIC TERMINAL SERVICES CO. (525)										
		DOCK WORK	7/7/26 7:00AM	LB 108	EO	7/6/26 1:12PM	LA	N	5	
		1DA 1DMSW 1UTR 2GAT (TONY D)								Flex and Early

Type Of Orders : Extra Order

Work Date: 7/7/26

Ver Alc#	Ship Name	Start Time	Berth	Type	Received Date/Time	Tags	Mod Status	Tota Jobs
----------	-----------	------------	-------	------	--------------------	------	------------	-----------

Shift : 1

INNOVATIVE TERMINALS INC. (XXXX)

DOCK WORK

7/7/26 7:00AM

950 BAREO

7/6/26 1:15PM

LA

N 1

1ST/6:30

(HULK)

**Flex and
Early**

AVERAGE REPORT
For Day Shift

	6/30/2026	7/1/2026	7/2/2026	7/3/2026	7/4/2026	7/5/2026	7/6/2026
	Tue	Wed	Thu	Fri	Sat	Sun	Mon
Container	0	0	0	0	0	0	0
Lashing	0	0	0	0	0	0	0
Primary	210	216	8	10	18	26	30
Secondary	177	177	0	0	8	16	24
Hold	186	189	8	9	17	25	27
Key Hold	130	130	0	0	0	0	0
Winch	160	168	0	0	8	8	16
Jitney	167	171	0	0	8	16	24
Dock	152	160	0	0	8	16	24
Lumber	168	168	0	0	0	0	0
Carpenter	126	134	8	8	8	8	16
A-Crane	188	196	8	11	19	22	22
Swamper	142	142	0	8	16	16	18
Casual	131	138	0	8	16	20	22
B-Crane	167	175	0	0	8	16	22
A-UTR	185	193	0	8	16	24	27
B_UTR	190	198	8	11	19	27	27
Mechanics	187	195	6	14	22	30	30
ID	170	178	8	14	22	24	24
Steady	0	0	0	0	0	0	0
Ship Gang	0	0	0	0	0	0	0
Dock Gang	0	0	0	0	0	0	0