

# International Longshore and Warehouse Union

## Bulletin



ILWU Local 13 • 630 Centre Street • San Pedro, CA 90731 • (310) 830-6116



## **Bulletin #38-25 Revised**

June 27, 2025

### **LOCAL 13 OFFICE CLOSED**

The Office will be closed on **Friday, July 4, 2025**, in observance of Independence Day holiday.

### **JULY 4<sup>TH</sup> & 5<sup>TH</sup> 2025 HOLIDAYS**

Friday, July 4<sup>th</sup>, 2025, will be a paid holiday.

Saturday, July 5<sup>th</sup>, 2025, Bloody Thursday is a holiday, but not a paid holiday. Overtime will be paid on the day the holiday is observed. Under the current contract, when a holiday falls on a weekend, the holiday shall be observed on the following Monday.

All work performed on Monday, July 7, 2025, will be at the overtime rate.

Under the current contract, a person does not have to meet the availability requirement (work two (2) days, Monday through Friday, exclusive of the day the holiday falls) if you have worked 1300 hours or more in the prior payroll year (2024) to receive the July 4th paid holiday.

Registered members who have 800 qualifying hours in the prior payroll year (2024) but less than 1300 hours, must meet the availability requirements for at least two (2) of the five (5) days Monday through Friday (exclusive of the day of the holiday) during the payroll week in

which the holiday falls in order to receive a paid holiday for July 4<sup>th</sup>. This means you must work or meet the availability requirements for at least two (2) days, Monday, June 31; Tuesday, July 1; Wednesday, July 2; or Thursday, July 3, 2025.

Individuals taking vacation during the holiday week must report the vacation to the Records Clerk in the Dispatch Hall on or before Friday, July 4, 2025. Individuals not receiving holiday pay because of illness, injury, jury duty, etc., must file a claim with the Records Clerk before Friday, August 15, 2025, to receive July 4, 2025, holiday pay. The July 4<sup>th</sup> holiday pay will be paid on the payroll check of July 11, 2025.

**STOP WORK MEETING**  
**THURSDAY, JULY 10, 2025 @ 7:00 P.M.**

Due to the July 4<sup>th</sup> holiday, the Regular Membership Meeting will be moved to a Stop Work Meeting on Thursday, July 10, 2025, at 7:00 p.m. at the ILWU Memorial Hall.

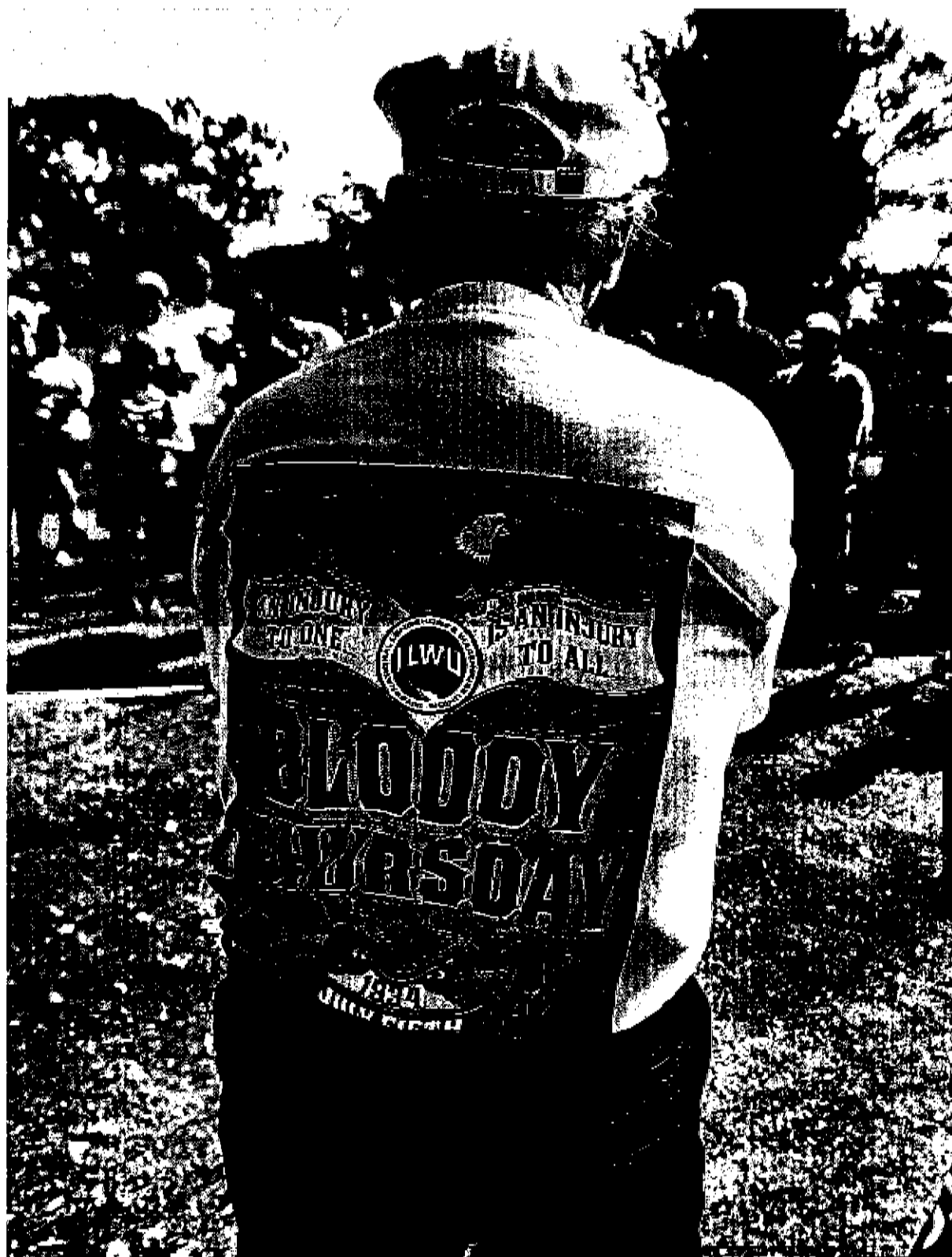
**EXECUTIVE BOARD MEETING**  
**THURSDAY, JULY 10, 2025**

Due to the Stop Work Meeting on Thursday, July 10, 2025, at 7:00 p.m., the regular scheduled Executive Board Meeting will be cancelled.

Fraternally,  
Gary Herrera  
*President*

Brandi Good  
*Vice President*

Gabe Zuniga  
*Secretary/Treasurer*



## Job Forecast Report

WorkDate: 7/5/2025

Shift: Day

7/4/2025 3:13:37PM

Gangs	Shorted	Early	MO	EO	MRO	RO	LM	Total
Container Gang	0	0	0	0	0	0	0	0
Lashing Gang	0	0	0	0	0	0	0	0
4002_Gang	0	0	0	0	0	0	0	0
4012_Gang	0	0	0	0	0	0	0	0
4112_Gang	0	0	0	0	0	0	0	0
D4	0	0	0	0	0	0	0	0
	0	0	0	0	0	0	0	0

Boards	Shorted	Early	MO	EO	MRO	RO	LM	Total
Hold	0	28	0	0	0	0	0	28
Crane	0	0	0	0	0	0	0	0
Crane Top Handler	0	0	0	0	0	0	0	0
Winch	0	0	0	0	0	0	0	0
Key Hold	0	0	0	0	0	0	0	0
Jitney	0	28	0	0	0	0	0	28
UTR	0	14	0	0	0	0	0	14
CY	0	1	0	0	0	0	0	1
Lumber	0	0	0	0	0	0	0	0
Carpenter	0	0	0	0	0	0	0	0
Swamper	0	0	0	0	0	0	0	0
Casual	0	0	0	0	0	0	0	0
Dock	0	55	0	0	0	0	0	55
Mechanics	0	0	0	0	0	0	0	0
Gear	0	0	0	0	0	0	0	0
	0	126	0	0	0	0	0	126

Number of flops (UTR - UTRWork = Flops):

SATURDAY "Bloody Thursday" Dayside  
7/5/25

— Final —

5/0  
13  
48  
77  
47  
10

Alc. #	Start Time	Order Type	Ship Name	Company	Berth	Tags
1	7:00AM	MO	CARNIVAL PANORAMA	MET	LB H4	FR PA
<b>28S 2D 46P/7:00 6HL 22CLW</b>						
<i>Flex and Early</i>						

**Type Of Orders : Extra Order****Work Date: 7/5/25**

Ver	Alc#	Ship Name	Start Time	Berth	Type	Received Date/Time	Tags	Mod Status	Tota Jobs
Shift : 1									
LONG BEACH CONT. TER. (512)									
		DOCK WORK RAILS	7/5/25 7:00AM	LB 24	EO	7/4/25 12:04PM	LA	N	19
IDA 5KDA 13UTR (TONY D)								Flex and Early	
-----									
APM TERMINALS (515)									
		DOCK WORK RAILS	7/5/25 7:00AM	TI 400	EO	7/4/25 1:44PM	LA	D	1
IST/6:30 (AL)								Flex and Early	
-----									
EVERPORT TERMINAL SERVICES (524)									
		DOCK WORK RAILS	7/5/25 7:00AM	TI 233	EO	7/4/25 1:38PM	LA	N	2
IDA 1UTR (marty)								Flex and Early	
-----									

**AVERAGE REPORT**  
***For Day Shift***

	6/27/202	6/28/202	6/29/202	6/30/202	7/1/2025	7/2/2025	7/3/2025	7/4/2025
	Fri	Sat	Sun	Mon	Tue	Wed	Thu	Fri
Container	0	0	0	0	0	0	0	0
Lashing	0	0	0	0	0	0	0	0
Primary	169	177	185	193	201	8	10	18
Secondary	0	0	0	0	0	0	0	0
Hold	153	161	169	177	185	8	16	20
Key Hold	70	78	78	86	94	8	10	18
Winch	140	148	156	164	172	8	16	24
Jitney	149	153	153	161	169	8	9	9
Dock	134	142	144	152	159	0	8	16
Lumber	76	76	76	76	84	8	16	16
Carpenter	105	105	112	120	128	0	8	8
A-Crane	107	115	123	131	132	0	6	14
Swamper	89	90	98	106	106	0	0	8
Casual	72	80	88	93	98	8	11	19
B-Crane	143	151	159	166	166	8	16	22
A-UTR	148	156	164	171	173	8	16	24
B_UTR	164	172	180	182	190	8	16	24
Mechanics	149	157	162	166	174	8	16	24
ID	128	136	141	145	152	8	16	20
Steady	0	0	0	0	0	0	0	0
Ship Gang	0	0	0	0	0	0	0	0
Dock Gang	0	0	0	0	0	0	0	0