



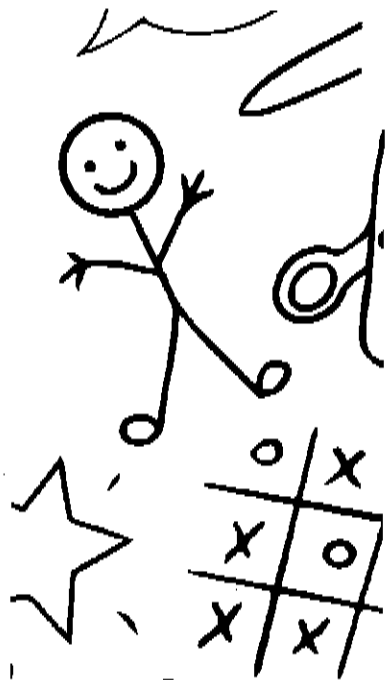
# ILWU Local 13



## Backpack and School Supply Drive

### Supplies Needed

- Backpacks
- Pens and Pencils
- Notebooks
- Ruled Paper
- 3 Ring Binders
- Crayons and Markers



Backpacks Can Be Donated at the Dispatch Hall  
and Local 13 Office

## Month of July!!!



Monetary Donations To Buy Supplies Can Be  
Made At Dues Window of Local13 Office



I L W U Local 13 • 630 Centre Street • San Pedro, CA 90731 • (310) 830-6116



**Bulletin #36-26**

June 26, 2026

**ATTENTION ALL CLASS B's**

Beginning with the job you pick-up at the Dispatch Hall on **Saturday, June 27, 2026:** ID's will have **comebacks on UTRs, General Cargo and Bulk Cargo ONLY.**

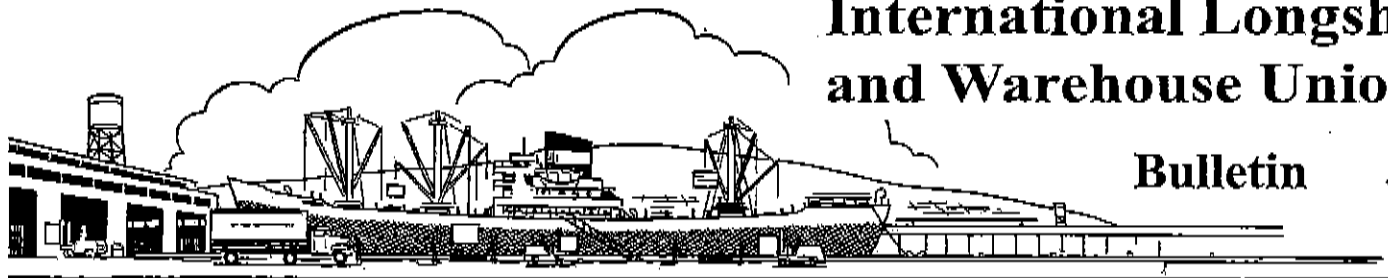
Please note: Comebacks will be on a month-to-month trial (*as manpower is needed*).

Class B IDs that are CY certified will continue to be ONE-DAY ONLY on all jobs.

Fraternally,  
Mario Medina  
*President*

Brandi Good  
*Vice President*

Gabriel "Big Gabe" Zuniga  
*Secretary/Treasurer*



ILWU Local 13 • 630 Centre Street • San Pedro, CA 90731 • (310) 830-1130

## Bulletin #33-26

June 10, 2026

# CHECK YOUR DUCKET AT THE WINDOW

### REMINDER:

All members are responsible for checking their work ducket at the dispatch window before walking away.

What does that mean? First and foremost, make sure it is your registration number on that ducket. Once you leave the window, that job is now yours. (See Dispatch Rules under "Flops" #5: *During the dispatch period, any member wishing to flop must do so before leaving the dispatch window. Once leaving the window with a job and/or the next number has been called, the member is obligated to report to the job, call a replacement, and work until the replacement arrives.*)

Keep in mind, companies are not accepting duckets that have work numbers scratched off or duckets that have a work number printed on it that does not match the member checking in.

Fraternally,

Mario Medina  
*President*

Brandi Good  
*Vice President*

Gabriel "Big Gabe" Zuniga  
*Secretary/Treasurer*

# Job Forecast Report

WorkDate: 7/6/2026

Shift: Night

7/6/2026 11:53:03AM

Gangs	Shorted	Early	MO	EO	MRO	RO	LM	Total
Container Gang	0	0	0	0	0	0	0	0
Lashing Gang	0	0	0	0	0	0	0	0
4002_Gang	0	0	0	0	0	0	0	0
4012_Gang	0	0	0	0	0	0	0	0
4112_Gang	0	1	1	0	0	0	0	2
D4	0	0	0	0	0	0	0	0
	0	1	1	0	0	0	0	2

Boards	Shorted	Early	MO	EO	MRO	RO	LM	Total
Hold	0	155	218	0	31	0	0	404
Crane	0	0	1	0	0	0	0	1
Crane Top Handler	0	0	0	0	0	0	0	0
Winch	0	0	2	0	0	0	0	2
UTR	0	12	196	0	40	0	0	248
CY	0	0	36	0	0	0	0	36
Jitney	0	2	20	0	1	0	0	23
Swamper	0	5	20	0	1	0	0	26
Casual	0	0	0	0	0	0	0	0
Dock	0	22	20	0	2	0	0	44
Mechanics	0	0	0	0	0	0	0	0
Gear	0	0	0	0	0	0	0	0
Carpenter	0	0	0	0	0	0	0	0
	0	196	513	0	75	0	0	784

Number of flops (UTR - UTRWork = Flops): 192

NIGHT SIDE  
EARLY

711  
55  
99  
38

Alc. #	Start Time	Order Type	Ship Name	Company	Berth	Tags
1	6:00PM <i>1S</i>	MRO	MSC MONICA CRISTINA	TTI	LB 140	LA
2	6:00PM <i>1HL</i>	MRO	WAN HAI A05	YTI	TI 214	LA
3	6:00PM <i>15S</i>	MRO	CSCL INDIAN OCEAN	LBCT	LB 24	LA
4	5:00PM <i>9S 2KDP</i>	MRO	GUTHORM MAERSK	SSA	TI 400	LA
<i>Early Dispatch</i>						
5	6:00PM <i>2KDP</i>	MRO	OOCL BAUHINIA	LBCT	LB 22	LA
6	6:00PM <i>4S 10UTR 3UTRS</i>	MRO	COSCO SHIPPING PEONY	SSA	LB 245	LA
7	6:00PM <i>3S 8UTR 3UTRS</i>	MRO	COSCO OCEANIA	SSA	LB 266	LA
8	5:00PM <i>1KDP</i>	MRO	COYHAIQUE	APM	TI 400	LA
<i>Early Dispatch</i>						
9	6:00PM <i>7UTR</i>	MRO	ONE FOCUS	ITS	LB 236	LA
10	6:00PM <i>1S</i>	MRO	MSC BARI	TTI	LB 140	LA
11	5:00PM <i>1UTRS</i>	MRO	HMM TOPAZ	APM	TI 400	LA
<i>Early Dispatch</i>						
12	5:00PM <i>4SL</i>	MO	MSC MONICA CRISTINA	TTI	LB 140	LA
<i>Flex and Early</i>						
13	6:00PM <i>4SL</i>	MO	MSC MONICA CRISTINA	TTI	LB 140	LA
14	6:00PM <i>8S 16SL 2DS 16UTR 4ST/5:30</i>	MO	WAN HAI A05	YTI	TI 214	LA

Alc. #	Time	Type	Ship Name	Company	Berth	LA
15	5:00PM	MO	CSCCL INDIAN OCEAN	LBCT	LB 24	LA
	<b>2S 1KDP</b>					
						<i>Flex and Early</i>
16	5:00PM	MO	GUTHORM MAERSK	APM	TI 400	LA
	<b>4S 1KDP</b>					
						<i>Flex and Early</i>
17	6:00PM	MO	GUTHORM MAERSK	APM	TI 400	LA
	<b>6S 20SL</b>					
18	6:00PM	MO	BBC GENOA	SSA	LB 206	GE
	<b>2S 2D 4HL</b>					<b>IS4112</b>
19	5:00PM	MO	ONE HANNOVER	TP	136	LA
	<b>1S</b>					
						<i>Flex and Early</i>
20	6:00PM	MO	ONE HANNOVER	TP	136	LA
	<b>3S 3DS 7UTR 2ST/5:30</b>					
21	5:00PM	MO	POCHARD	P.S.T.	176	GE
	<b>2S</b>					<b>IS4112</b>
						<i>Flex and Early</i>
22	6:00PM	MO	POCHARD	P.S.T.	176	GE
	<b>2D 2HL 4UTR</b>					
23	5:00PM	MO	OOCL BAUHINIA	LBCT	LB 22	LA
	<b>5KDP</b>					
						<i>Flex and Early</i>
24	6:00PM	MO	OOCL BAUHINIA	LBCT	LB 22	LA
	<b>4S 1KDP</b>					
25	6:00PM	MO	COSCO SHIPPING PEONY	SSA	LB 245	LA
	<b>4S 1DS 8UTR 1UTRS 3ST/5:30</b>					
26	5:00PM	MO	COSCO OCEANIA	SSA	LB 266	LA
	<b>8SL</b>					
						<i>Flex and Early</i>
27	6:00PM	MO	COSCO OCEANIA	SSA	LB 266	LA
	<b>2UTR</b>					
28	5:00PM	MO	COYHAIQUE	APM	TI 400	LA
	<b>1S</b>					
						<i>Flex and Early</i>
29	6:00PM	MO	COYHAIQUE	APM	TI 400	LA
	<b>2S</b>					

Alc. #	Time	Type	Ship Name	Company	Berth	LA
30	6:00PM <b>2UTR</b>	MO	ONE FOCUS	ITS	LB 236	LA
31	5:00PM <b>1DS</b>	MO	MSC BARI	TTI	LB 140	LA
<i>Flex and Early</i>						
32	6:00PM <b>4S 1DS 9UTR</b>	MO	MSC BARI	TTI	LB 140	LA
33	5:00PM <b>8S 2KDP</b>	MO	HMM TOPAZ	APM	TI 400	LA
<i>Flex and Early</i>						
34	6:00PM <b>2S</b>	MO	HMM TOPAZ	APM	TI 400	LA
35	5:00PM <b>12SL 1DS 1HL 1UTRS</b>	MO	GEORGE II	SSA	LB 92	LA
<i>Flex and Early</i>						
36	6:00PM <b>17S 2DS 24UTR 2UTRS 9ST/5:30</b>	MO	GEORGE II	SSA	LB 92	LA
37	5:00PM <b>12SL</b>	MO	CMA CGM MUSCA	FMS	TI 303	LA
<i>Flex and Early</i>						
38	6:00PM <b>16S 4DS 36UTR</b>	MO	CMA CGM MUSCA	FMS	TI 303	LA
39	5:00PM <b>8S 3KDP 2UTRS</b>	MO	MISSOURI EXPRESS	APM	TI 400	LA
<i>Flex and Early</i>						
40	6:00PM <b>1S</b>	MO	MISSOURI EXPRESS	APM	TI 400	LA
41	5:00PM <b>8S 3KDP 2UTRS</b>	MO	SEASPAN GANGES	APM	TI 400	LA
<i>Flex and Early</i>						
42	6:00PM <b>1S</b>	MO	SEASPAN GANGES	APM	TI 400	LA
43	6:00PM <b>8S 2DS 14UTR 2UTRS 6ST/5:30</b>	MO	KAIMANA HILA	SSA	LB 60	LA
44	5:00PM <b>6S 24SL 3DS 1HL 3UTRS</b>	MO	SM LONG BEACH	SSA	LB 96	LA
<i>Flex and Early</i>						

Jul. 6. 2026 12:37PM No. 8630 P. 8

Alc. #	Time	Type	Ship Name	Company	Berth	LA
45	6:00PM	MO	SM LONG BEACH <i>16S 1DS 28UTR 1UTRS 12ST/5:30</i>	SSA	LB 96	LA
46	6:00PM	MO	TOSCANA <i>12S 20SL 6DA 1HT 1DWD 14HLW</i>	SSA	LB 205	LA RO
47	5:00PM	MO	OOCL BRUSSELS <i>6S 36SL 2KDP 3UTRS</i>	LBCT	LB 26	LA
<i>Flex and Early</i>						
48	6:00PM	MO	OOCL BRUSSELS <i>4S 1KDP</i>	LBCT	LB 26	LA
49	6:00PM	MO	CSCL INDIAN OCEAN <i>4S 1KDP</i>	LBCT	LB 24	LA
50	5:00PM	MO	GUTHORM MAERSK <i>4S 2KDP</i>	APM	TI 400	LA
<i>Flex and Early</i>						
51	6:00PM	MO	OOCL BAUHINIA <i>4S</i>	LBCT	LB 22	LA
52	6:00PM	MO	MSC BARI <i>4S 1DS 9UTR</i>	TTI	LB 140	LA
53	6:00PM	MO	CMA CGM MUSCA <i>12S 3DS 27UTR</i>	FMS	TI 303	LA
54	3:00AM	MO	COYHAIQUE <i>10S 3KDP 2UTR</i>	APM	TI 400	LA
55	3:00AM	MO	SEASPAN GANGES <i>14S 4KDP 1HH/2:30 2UTRS</i>	APM	TI 400	LA

**AVERAGE REPORT**  
***For Night Shift***

	6/29/2026	6/30/2026	7/1/2026	7/2/2026	7/3/2026	7/4/2026	7/5/2026
	Mon	Tue	Wed	Thu	Fri	Sat	Sun
<b>Container</b>	0	0	0	0	0	0	0
<b>Lashing</b>	0	0	0	0	0	0	0
<b>Primary</b>	189	197	205	8	16	22	22
<b>Secondary</b>	153	161	169	8	10	10	18
<b>Hold</b>	167	175	179	8	16	18	20
<b>Dock</b>	142	142	150	0	8	16	18
<b>Jitney</b>	126	134	142	0	7	15	16
<b>Winch</b>	155	163	171	0	8	16	20
<b>Carpenter</b>	132	135	141	0	8	9	17
<b>A-Crane</b>	167	175	183	8	16	22	22
<b>Casual</b>	118	119	123	8	11	18	18
<b>Swamper</b>	114	120	120	0	8	16	16
<b>B-Crane</b>	182	190	198	0	8	16	24
<b>A-UTR</b>	171	179	180	8	9	17	18
<b>B_UTR</b>	183	189	197	8	16	24	24
<b>Mechanics</b>	146	154	154	0	8	9	9
<b>Night ID</b>	164	164	172	8	16	24	24
<b>Steady</b>	0	0	0	0	0	0	0
<b>Ship Gang</b>	0	0	0	0	0	0	0
<b>Dock Gang</b>	0	0	0	0	0	0	0

# Job Forecast Report

WorkDate: 7/7/2026

Shift: Day

7/6/2026 11:53:16AM

Gangs	Shorted	Early	MO	EO	MRO	RO	LM	Total
Container Gang	0	0	0	0	0	0	0	0
Lashing Gang	0	0	0	0	0	0	0	0
4002_Gang	0	0	0	0	0	0	0	0
4012_Gang	0	0	0	0	0	0	0	0
4112_Gang	0	0	0	0	0	0	0	0
D4	0	0	0	0	0	0	0	0
	0	0	0	0	0	0	0	0

Boards	Shorted	Early	MO	EO	MRO	RO	LM	Total
Hold	0	124	199	0	22	0	0	345
Crane	0	0	4	0	0	0	0	4
Crane Top Handler	0	0	0	0	0	0	0	0
Winch	0	0	6	0	0	0	0	6
Key Hold	0	0	3	0	0	0	0	3
Jitney	0	1	28	0	2	0	0	31
UTR	0	7	220	0	17	0	0	244
CY	0	0	49	0	0	0	0	49
Lumber	0	0	2	0	0	0	0	2
Carpenter	0	0	0	0	0	0	0	0
Swamper	0	7	25	0	0	0	0	32
Casual	0	0	0	0	0	0	0	0
Dock	0	7	7	0	2	0	0	16
Mechanics	0	0	0	0	0	0	0	0
Gear	0	0	0	0	0	0	0	0
	0	146	543	0	43	0	0	732

Number of flops (UTR - UTRWork = Flops): 220

13  
47

DAYSIDE  
~~EARLY~~

Alc. #	Start Time	Order Type	Ship Name	Company	Berth	Tags
1	8:00AM <i>IS</i>	MRO	MSC MONICA CRISTINA	TTI	LB 140	LA
2	8:00AM <i>IS</i>	MRO	CSCL INDIAN OCEAN	LBCT	LB 24	LA
3	7:00AM <i>IS</i>	MRO	GUTHORM MAERSK	APM	TI 400	LA
4	8:00AM <i>IS</i>	MRO	BBC GENOA	SSA	LB 206	GE
5	8:00AM <i>IS</i>	MRO	ONE HANNOVER	TP	136	LA
6	8:00AM <i>2D 2HL</i>	MRO	POCHARD	P.S.T.	176	GE
7	8:00AM <i>IS</i>	MRO	OOCL BAUHINIA	LBCT	LB 22	LA
8	8:00AM <i>2UTR</i>	MRO	COSCO SHIPPING PEONY	SSA	LB 245	LA
9	8:00AM <i>2UTR</i>	MRO	COSCO OCEANIA	SSA	LB 266	LA
10	7:00AM <i>IS</i>	MRO	COYHAIQUE	APM	TI 400	LA
11	8:00AM <i>2S</i>	MRO	ONE FOCUS	ITS	LB 236	LA
12	8:00AM <i>IS</i>	MRO	MSC BARI	TTI	LB 140	LA
13	7:00AM <i>IS</i>	MRO	HMM TOPAZ	APM	TI 400	LA
14	8:00AM <i>1UTR</i>	MRO	CMA CGM MUSCA	FMS	TI 303	LA

*Early Dispatch**Early Dispatch**Early Dispatch*

Alc. #	Time	Type	Ship Name	Company	Berth	Tags
15	7:00AM <i>IS</i>	MRO	MISSOURI EXPRESS	APM	TI 400	LA
<i>Early Dispatch</i>						
16	7:00AM <i>IS</i>	MRO	SEASPAN GANGES	APM	TI 400	LA
<i>Early Dispatch</i>						
17	8:00AM <i>6S 8SL 10UTR 2UTRS</i>	MRO	KAIMANA HILA	SSA	LB 60	LA
18	7:00AM <i>4SL</i>	MO	MSC MONICA CRISTINA	TTI	LB 140	LA
<i>Flex and Early</i>						
19	8:00AM <i>4SL</i>	MO	MSC MONICA CRISTINA	TTI	LB 140	LA
20	7:00AM <i>10SL</i>	MO	CSCL INDIAN OCEAN	LBCT	LB 24	LA
<i>Flex and Early</i>						
21	8:00AM <i>10SL</i>	MO	CSCL INDIAN OCEAN	LBCT	LB 24	LA
22	7:00AM <i>IS</i>	MO	GUTHORM MAERSK	APM	TI 400	LA
<i>Flex and Early</i>						
23	8:00AM <i>IS</i>	MO	GUTHORM MAERSK	APM	TI 400	LA
24	8:00AM <i>IS</i>	MO	BBC GENOA	SSA	LB 206	GE
25	8:00AM <i>2S 4CLW</i>	MO	COLUMBIA	CCMW	LB 122	LA LU
26	7:00AM <i>IS</i>	MO	ONE HANNOVER	TP	136	LA
<i>Flex and Early</i>						
27	8:00AM <i>IS</i>	MO	ONE HANNOVER	TP	136	LA
28	8:00AM <i>2S 1DWD</i>	MO	CYMONA LIFE	PTSC	LB 232	SH-Cement
29	7:00AM <i>1KDP</i>	MO	OOCL BAUHINIA	LBCT	LB 22	LA
<i>Flex and Early</i>						

Alc. #	Time	Type	Ship Name	Company	Berth	LA
30	8:00AM	MO	COSCO SHIPPING PEONY	SSA	LB 245	LA
	<b>4S 1DS 8UTR 1UTRS 3ST/7:30</b>					
31	7:00AM	MO	COSCO OCEANIA	SSA	LB 266	LA
	<b>12SL</b>					
	<i>Flex and Early</i>					
32	8:00AM	MO	COSCO OCEANIA	SSA	LB 266	LA
	<b>2UTR</b>					
33	7:00AM	MO	COYHAIQUE	APM	TI 400	LA
	<b>1S</b>					
	<i>Flex and Early</i>					
34	8:00AM	MO	COYHAIQUE	APM	TI 400	LA
	<b>1S</b>					
35	7:00AM	MO	ONE FOCUS	ITS	LB 236	LA
	<b>1DS</b>					
	<i>Flex and Early</i>					
36	8:00AM	MO	ONE FOCUS	ITS	LB 236	LA
	<b>2UTR</b>					
37	7:00AM	MO	MSC BARI	TTI	LB 140	LA
	<b>1DS</b>					
	<i>Flex and Early</i>					
38	8:00AM	MO	MSC BARI	TTI	LB 140	LA
	<b>4SL</b>					
39	7:00AM	MO	HMM TOPAZ	APM	TI 400	LA
	<b>4S 1KDP</b>					
	<i>Flex and Early</i>					
40	8:00AM	MO	HMM TOPAZ	APM	TI 400	LA
	<b>1S</b>					
41	8:00AM	MO	GEORGE II	SSA	LB 92	LA
	<b>4S 1DS 1HL 7UTR 1UTRS 3ST/7:30</b>					
42	8:00AM	MO	PRESTIGE ACE	PA	WI 198	LA
	<b>3KH 34SD 7SL 1DS 2HT 1DWD 5CLW</b>					
43	7:00AM	MO	CMA CGM MUSCA	FMS	TI 303	LA
	<b>1UTR</b>					
	<i>Flex and Early</i>					
44	8:00AM	MO	CMA CGM MUSCA	FMS	TI 303	LA
	<b>1ST/7:30</b>					

Alc. #	Time	Type	Ship Name	Company	Berth	No. 8630 Days	P. 14
45	7:00AM	MO	MISSOURI EXPRESS	APM	TI 400	LA	
	<b>8S 2KDP</b>						
							<i>Flex and Early</i>
46	8:00AM	MO	MISSOURI EXPRESS	APM	TI 400	LA	
	<b>1S</b>						
47	7:00AM	MO	SEASPAN GANGES	APM	TI 400	LA	
	<b>4S 1KDP</b>						
							<i>Flex and Early</i>
48	8:00AM	MO	SEASPAN GANGES	APM	TI 400	LA	
	<b>1S</b>						
49	8:00AM	MO	KAIMANA HILA	SSA	LB 60	LA	
	<b>1HL</b>						
50	8:00AM	MO	SM LONG BEACH	SSA	LB 96	LA	
	<b>8S 2DS 1HL 14UTR 2UTRS 6ST/7:30</b>						
51	8:00AM	MO	TOSCANA	SSA	LB 205	LA RO	
	<b>12S 6DA 1HT 1DWD 14HLW</b>						
52	7:00AM	MO	OOCL BRUSSELS	LBCT	LB 26	LA	
	<b>2S 2KDP</b>						
							<i>Flex and Early</i>
53	8:00AM	MO	OOCL BRUSSELS	LBCT	LB 26	LA	
	<b>8S 1KDP 2UTRS</b>						
54	8:00AM	MO	SUPER NOVA	MET	LB 214	SH-All Comd	
	<b>1CDAB/7:30 1PLMD</b>						
55	7:00AM	MO	YM UNIFORMITY	PA	100	LA	
	<b>2S 2SL 1DS 2UTR</b>						
							<i>Flex and Early</i>
56	8:00AM	MO	YM UNIFORMITY	PA	100	LA	
	<b>18S 4DS 38UTR 10ST/7:30</b>						
57	7:00AM	MO	YM MATURITY	TP	136	LA	
	<b>12SL 1DS 1UTR</b>						
							<i>Flex and Early</i>
58	8:00AM	MO	YM MATURITY	TP	136	LA	
	<b>8S 1DS</b>						
59	7:00AM	MO	MATSON OAHU	SSA	LB 94	LA	
	<b>2S 22SL 1DS 1HL 1UTRS</b>						
							<i>Flex and Early</i>

Jul. 6. 2026 12:39PM

No. 8630 P. 15

Alc. #	Time	Type	Ship Name	Company	Berth	LA
60	8:00AM	MO	MATSON OAHU	SSA	LB 94	LA
	<b>18S 3DS 28UTR 3UTRS 12ST/7:30</b>					
-----						
61	7:00AM	MO	GANGES	ITS	LB 232	LA
	<b>2S 16SL 1DS 1UTR</b>					
-----						
<i>Flex and Early</i>						
62	8:00AM	MO	GANGES	ITS	LB 232	LA
	<b>14S 3DS 33UTR 9ST/7:30</b>					
-----						
63	8:00AM	MO	CEMTEX ORIENT	MET	LB 212	SH-All Comd
	<b>1CDAB/7:30 1PLMD</b>					
-----						
64	8:00AM	MO	MSC BARI	TTI	LB 140	LA
	<b>4S 1DS 9UTR</b>					
-----						
65	8:00AM	MO	CMA CGM MUSCA	FMS	TI 303	LA
	<b>4S 1DS 9UTR</b>					
-----						
66	8:00AM	MO	YM UNIFORMITY	PA	100	LA
	<b>4S 1DS 8UTR 2ST/7:30</b>					
-----						
67	8:00AM	MO	MATSON OAHU	SSA	LB 94	LA
	<b>5S 1DS 2HH/7:30 7UTR 1UTRS 3ST/7:30</b>					
-----						
68	7:00AM	MO	CMA CGM FLORIDA	FMS	TI 304	LA
	<b>2S 12SL 1DS 1UTR</b>					
-----						
<i>Flex and Early</i>						
69	8:00AM	MO	CMA CGM FLORIDA	FMS	TI 304	LA
	<b>16S 4DS 36UTR</b>					
-----						
70	8:00AM	MO	CMA CGM FLORIDA	FMS	TI 304	LA
	<b>4S 1DS 9UTR</b>					
-----						

**AVERAGE REPORT**  
***For Day Shift***

	6/30/2026	7/1/2026	7/2/2026	7/3/2026	7/4/2026	7/5/2026	7/6/2026
	Tue	Wed	Thu	Fri	Sat	Sun	Mon
<b>Container</b>	0	0	0	0	0	0	0
<b>Lashing</b>	0	0	0	0	0	0	0
<b>Primary</b>	210	216	8	10	18	26	30
<b>Secondary</b>	177	177	0	0	8	16	24
<b>Hold</b>	186	189	8	9	17	25	27
<b>Key Hold</b>	130	130	0	0	0	0	0
<b>Winch</b>	160	168	0	0	8	8	16
<b>Jitney</b>	167	171	0	0	8	16	24
<b>Dock</b>	152	160	0	0	8	16	24
<b>Lumber</b>	168	168	0	0	0	0	0
<b>Carpenter</b>	126	134	8	8	8	8	16
<b>A-Crane</b>	188	196	8	11	19	22	22
<b>Swamper</b>	142	142	0	8	16	16	18
<b>Casual</b>	131	138	0	8	16	20	22
<b>B-Crane</b>	167	175	0	0	8	16	22
<b>A-UTR</b>	185	193	0	8	16	24	27
<b>B_UTR</b>	190	198	8	11	19	27	27
<b>Mechanics</b>	187	195	6	14	22	30	30
<b>ID</b>	170	178	8	14	22	24	24
<b>Steady</b>	0	0	0	0	0	0	0
<b>Ship Gang</b>	0	0	0	0	0	0	0
<b>Dock Gang</b>	0	0	0	0	0	0	0