

ILWU Local 13 • 630 Centre Street • San Pedro, CA 90731 • (310) 830-1130

## Bulletin #31-25

May 19, 2025

### **MEMORIAL DAY HOLIDAY** **MONDAY, MAY 26, 2025**

ILWU Local 13 Office will be closed on **Monday, May 26, 2025** due to the Memorial Day Holiday.

*The Officers of Local 13 would like to wish everyone a safe holiday!*

### **MEMORIAL DAY PAID HOLIDAY** **MONDAY, MAY 26, 2025**

Memorial Day Monday, May 26, 2025, will be a paid holiday. Only registered members who have 800 qualifying hours in the prior payroll year (2024) and meet the availability requirements for at least two (2) of the five (5) days Monday through Friday (exclusive of the day of the holiday) during the payroll week in which the holiday falls will receive a paid holiday for Memorial Day. This means you must work or meet the availability requirements for at least two (2) days, Tuesday, May 27<sup>th</sup>; Wednesday, May 28<sup>th</sup>; Thursday, May 29<sup>th</sup>; and Friday, May 30, 2025.

Under the current contract one does not have to meet the availability requirements if you have worked 1300 hours in the

prior payroll year (2024) to receive the Memorial Day paid holiday.

Persons taking vacation during Memorial Day week must report the vacation to the Records Clerk in the Dispatch Hall on or before Friday, May 30, 2025. Persons not receiving holiday pay because of illness, injury, jury duty, etc., must file a claim with the Records Clerk before Friday, July 11, 2025, to receive Memorial Day holiday pay. The Memorial Day holiday pay will be paid on the payroll check of June 6, 2025.

### **NIGHT DOCK BOARD SIGN-UPS**

Sign-ups for the Night Dock Board will be available with the Records Clerk starting on Monday, June 2, 2025, through Monday, June 30, 2025.

### **SHIP & DOCK GANG SIGN-UPS**

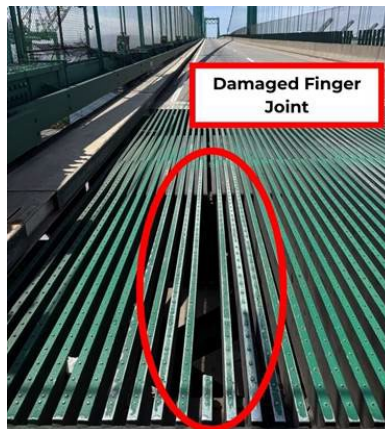
Sign-ups for Ship & Dock Gang will be available with the Records Clerk starting on Monday, June 2, 2025, through Monday, June 30, 2025.

### **TRAFFIC ADVISORY** **VINCENT THOMAS BRIDGE**

Caltrans Announces Emergency Closure of No. 2 Lane of Northbound State Route 47 at Vincent Thomas Bridge for Roadway Repairs.

The California Department of Transportation (Caltrans) announces the emergency closure of the No. 2 Lane of northbound State Route 47 at Vincent Thomas Bridge following the discovery of a damaged roadway component known as a finger joint. The duration of the closure for repair work is presently unknown.

Maritime activity beneath the bridge will not be affected by the emergency repairs, as work will be contained to the roadway and the bridge's existing catwalk.



Motorists should expect delays when utilizing the Vincent Thomas Bridge and use Caltrans Quickmap ([quickmap.dot.ca.gov](http://quickmap.dot.ca.gov)) to review current traffic conditions before traveling. Caltrans reminds drivers to exercise increased caution near the closure and **Slow for the Cone Zone**.

***The Officers of Local 13 would like to wish everyone a safe holiday!***

Gary Herrera  
President

Brandi Good  
Vice President

Gabe Zuniga  
Secretary/Treasurer